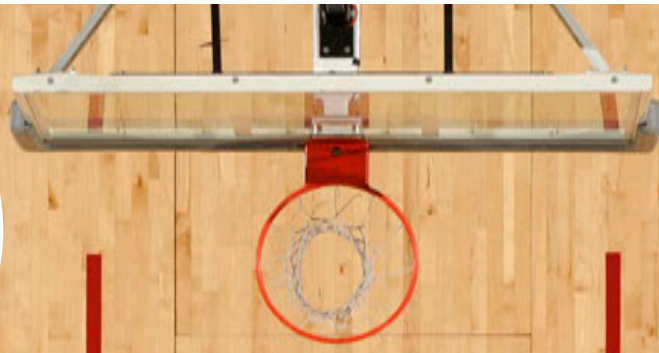


6A BASKETBALL

MARCH 11-14, 2020 *CHILES CENTER* PORTLAND



2019-2020



┌ ○ for Oregon
○ for Opportunity
○ for OnPoint └

When we play as a team, we win as one too. As a proud sponsor of the OSAA/OnPoint State Championships, OnPoint always roots for our team. So, whether you're working for today, planning for your future or chasing a goal, OnPoint has the local banking and lending to help you do it.

OSAA / ONPOINT COMMUNITY CREDIT UNION STATE CHAMPIONSHIPS



Welcome to the OSAA / OnPoint Community Credit Union State Championships!

As the OSAA enters its second century, we remain steadfast in our efforts to support and serve our member schools and their students. We live in a competitive society and while winning is often our goal, it is not our purpose.

Our purpose is not to teach students how to shoot a three-pointer or throw a curveball, but rather how to utilize the resilience, patience, and commitment that comes from endeavoring to achieve these goals to overcome adversity as they develop into contributing members of society.

Congratulations to the students, coaches, and school communities who earned the right to compete in this state championship! And a special thanks to OnPoint Community Credit Union for sharing our belief in the importance and value of high school activities through their continued financial commitment.

Thank you for your support of Oregon high school activities.

Peter Weber
Executive Director
Oregon School Activities Association



On behalf of OnPoint Community Credit Union and our valued members, welcome to the OSAA/OnPoint Community Credit Union State Championships!

At OnPoint, it's the people and communities we serve that matter most. From our members and employees, to our neighbors and community partners, we are committed to helping people prosper. A trusted financial partner with deep roots in education, OnPoint's community connection is strengthened by the passion and commitment of our 755 employees and over 390,000 members.

Since our founding in 1932, OnPoint has made it a priority to deepen our presence in the community by supporting students, schools and educators. We recognize the value of equipping students with the tools they need to reach their full potential throughout their education. We are proud to partner with the OSAA to encourage an environment where students can learn and grow in community, teamwork and leadership.

Congratulations to all of the students, schools, coaches and families participating in today's state championship. You have worked hard to get here, and we are honored to be a part of your celebration.

Rob Stuart
President/Chief Executive Officer
OnPoint Community Credit Union





Health insurance that's right for **you.**

Individual | Family | Medicare

Proud sponsor of the OSAA





PACIFIC OFFICE
AUTOMATION

— PROBLEM SOLVED —

FOR OVER 35 YEARS

LOCALLY OWNED,

NATIONALLY RECOGNIZED

OUR PEOPLE MAKE TECHNOLOGY WORK.

Document management, IT services, printers & multifunction products, and more for your digital success

Pacific Office Automation
14747 NW Greenbrier Parkway
Beaverton, OR 97006

(888) 896-9029
pacificoffice.com



SHARP®

OSAA



25200 SW Parkway Avenue, Suite 1
Wilsonville, OR 97070-9616

www.osaa.org

About the OSAA

The OSAA is comprised of 290 member high schools representing more than 200 Oregon communities. A private non-profit, board-governed association, the OSAA is sanctioned by the Oregon State Board of Education and is a member of the National Federation of State High School Associations (NFHS).

It's History

The OSAA began in 1918 when administrators from 36 schools recognized a need for an organization to coordinate and regulate high school interscholastic competition. Thus the Oregon State High School Athletic Association was formed. The name was changed in 1947 to reflect the inclusion of activities outside of traditional athletics.

Mission Statement

The mission of the OSAA is to serve member schools by providing leadership and state coordination for the conduct of interscholastic activities, which will enrich the educational experiences of high school students. The OSAA will work to promote interschool activities that provide equitable participation opportunities, positive recognition and learning experiences to students, while enhancing the achievement of educational goals.

What the OSAA Does

Much like the NCAA at the collegiate level, the OSAA regulates the eligibility and competition of all high school students in the state. This includes everything from determining which league a school will compete in to sponsoring and administering state championships.

Funding

As a private, non-profit organization, the OSAA does not receive any state funding. Revenue is generated from three sources: school membership fees, state championship gate receipts and corporate sponsors.

OSAA Activities

The OSAA sponsors 113 team and 426 individual event state championships for students competing in 19 interscholastic activities:

Fall

Cross Country, Volleyball, Soccer, Football

Winter

Cheerleading, Wrestling, Swimming, Basketball, Dance/Drill

Spring

Speech, Solo Music, Choir, Band/Orchestra
Golf, Tennis, Track & Field, Softball, Baseball

EXECUTIVE BOARD



Mike Scott
Superintendent
Hillsboro SD
6A



Gustavo Balderas
Superintendent
Eugene SD
5A



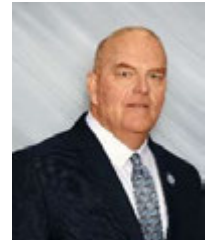
Curt Shelley
Superintendent
Tillamook SD
4A



Steve Quick
Superintendent
Harney County SD
3A



Jeff Clark
Principal
Oakland HS
2A



Jack Henderson (Pres.)
Superintendent
Dufur SD
1A



Dr. A. Katrise Perera
Superintendent
Gresham-Barlow SD
6A/5A/4A At-Large



Heidi Sipe (Vice Pres.)
Superintendent
Umatilla SD
3A/2A/1A At-Large



Sherry Higgins
School Board
Lane County ESD
OSBA



Mark Horak
Athletic Director
West Linn HS
OADA



Linda Myers
Asst. Superintendent
Salem-Keizer SD
Activities



John Beck
Coach
Grant HS
OACA



Jack Folliard
Executive Director
OAOA

OREGON SCHOOL ACTIVITIES ASSOCIATION
2019-20 Delegate Assembly

| DISTRICT | TERM EXP | | NAME | POSITION | SCHOOL / DISTRICT |
|--------------------------------------|----------|------|-----------------------|----------------------------|------------------------|
| 6A-1 Portland Interscholastic League | 2020 | | Chris Frazier | Principal | Franklin HS |
| 6A-2 Metro League | 2020 | ** | Don Grotting | Superintendent | Beaverton SD |
| 6A-3 Pacific Conference | 2021 | EB | Mike Scott | Superintendent | Hillsboro SD |
| 6A-4 Mt. Hood Conference | 2022 | EB* | Katrise Perera | Superintendent | Gresham-Barlow SD |
| 6A-5 Three Rivers League | 2021 | | Andy Jones | Assistant Principal | Oregon City HS |
| 6A-6 Mountain Valley Conference | 2021 | | Lara Tiffin | Principal | South Salem HS |
| 6A-7 Southwest Conference | 2021 | | Clay Rounsaville | Athletic Director | Grants Pass HS |
| 5A-1 Northwest Oregon Conference | 2021 | | Scot Stockwell | Superintendent | St. Helens SD |
| 5A-2 Midwestern League | 2021 | ** | Kelly Bokn | District Athletic Director | Eugene SD |
| 5A-3 Mid-Willamette Conference | 2022 | * | Rich Engel | Assistant Principal | West Albany HS |
| 5A-4 Intermountain Conference | 2021 | ** | Mike McIntosh | Superintendent | Redmond SD |
| 4A-1 Cowapa League | 2021 | EB | Curt Shelley | Superintendent | Tillamook SD |
| 4A-2 Tri-Valley Conference | 2021 | ** | Ryan Carpenter | Superintendent | Estacada SD |
| 4A-3 Oregon West Conference | 2021 | | Alan Kirby | Principal | Stayton HS |
| 4A-4 Sky-Em League | 2021 | | Gary Carpenter | Superintendent | Fern Ridge SD |
| 4A-5 Skyline Conference | 2020 | | Erik Lathen | Principal | North Valley HS |
| 4A-6 Greater Oregon League | 2022 | * | George Mendoza | Superintendent | La Grande SD |
| 3A-1 Lewis & Clark League | 2021 | | Scott Olson | Principal | Horizon Christian HS |
| 3A-2 PacWest Conference | 2021 | | Chris Daniels | Principal | Amity HS |
| 3A-3 Coastal Range League | 2021 | | Ian O'Brien | Assistant Principal | Warrenton HS |
| 3A-4 Mountain Valley Conference | 2021 | | Adam Watkins | Principal | Creswell HS |
| 3A-5 Far West League | 2021 | | Kevin Hunt | Principal | Sutherlin HS |
| 3A-6 Eastern Oregon League | 2021 | EB | Heidi Sipe | Superintendent | Umatilla SD |
| 2A-1 Northwest League | 2020 | | Misty Wharton | Superintendent | Nestucca Valley SD |
| 2A-2 Tri-River Conference | 2021 | | Dean Rech | Principal | Sheridan HS |
| 2A-3 Central Valley Conference | 2021 | EB** | Jeff Clark | Principal | Oakland HS |
| 2A-4 Sunset Conference | 2022 | * | Bart Rothenberger | Athletic Director | Toledo HS |
| 2A-5 Southern Cascade League | 2021 | | Jamie Ongman | Principal | Lost River HS |
| 2A-6 Blue Mountain Conference | 2021 | | Matt Combe | Principal | Hepner HS |
| 1A-1 The Valley 10 League | 2021 | ** | Mark Sherman | Vice Principal | Southwest Christian HS |
| 1A-2 Casco League | 2021 | | Dan Dugan | Vice Principal/AD | Perrydale HS |
| 1A-3 Mountain West League | 2020 | | Marc Thielman | Superintendent | Alsea SD |
| 1A-4 Skyline League | 2022 | ** | Scott Yakovich | Principal | North Douglas HS |
| 1A-5 Mountain Valley League | 2022 | * | David Haynes | Principal | Trinity Lutheran HS |
| 1A-6 Big Sky League | 2020 | EB | Jack Henderson | Superintendent | Dufur SD |
| 1A-7 Old Oregon League | 2021 | | Lance Homan | Superintendent | Joseph SD |
| 1A-8 High Desert League | 2020 | | Kevin Purnell | Superintendent | Adrian HS |
| Oregon School Boards Assn | 2020 | EB | Sherry Duerst-Higgins | School Board | Lane County ESD |
| Oregon Athletic Directors Assn | 2019 | EB | Mark Horak | Athletic Director | West Linn HS |
| Activities Advisory Committee | 2022 | EB* | Linda Myers | Assistant Superintendent | Salem-Keizer SD |
| Oregon Athletic Coaches Assn | 2020 | EB | John Beck | Coach | Grant HS |
| Oregon Athletic Officials Assn | 2019 | EB | Jack Folliard | Executive Director | Officials Association |

* Newly elected ** Re-elected
(EB) OSAA Executive Board Member





THE NATION'S LEADER IN



HIGH SCHOOL SPORTS



STREAMING LIVE ON NFHSNETWORK.COM FROM ANY DEVICE



SUBSCRIBE



FOLLOW



WATCH



 WATCH LIVE NOW

WWW.NFHSNETWORK.COM

OSAA Boys Basketball Championships

State Champions Past 10 Years *(see www.osaa.org/archives for a complete list of all-time state champions)*

| Year | Class | State Champion (W-L) | Coach | 2 nd Place (W-L) | Coach | Score | Site |
|--|-------|--------------------------------------|-------------------|--------------------------------------|------------------------|--------------|-------------------------------|
| 2009 | 6A | Jesuit (25-3) | Gene Potter | Lincoln (19-10) | David Adelman | 63-41 | McArthur Court, Eugene |
| | 5A | Jefferson (20-6) | Pat Strickland | Century (22-8) | Scott Kellar | 60-44 | McArthur Court, Eugene |
| | 4A | Brookings-Harbor (28-0) | Bryan Wood | Central (20-2) | Bob McBeth | 52-49 | Gill Coliseum, Corvallis |
| | 3A | Cascade Christian (27-3) | Brian Morse | Horizon Christian (25-6) | Dave Brown | 48-37 | Cone Field House, Salem |
| | 2A | Knappa (25-5) | Craig Cokley | De La Salle North Catholic (23-6) | Forbes Lapp | 41-36 | Pendleton Convention Center |
| | 1A | Powder Valley (21-2) | Kyle Dixon | Mohawk (25-5) | Laric Cook / Tim Yokum | 73-59 | Baker HS |
| 2010 | 6A | Jesuit (26-2) | Gene Potter | Westview (25-4) | Pat Coons | 66-44 | Rose Garden, Portland |
| | 5A | Jefferson (26-2) | Pat Strickland | Mountain View (26-2) | Craig Reid | 57-48 | McArthur Court, Eugene |
| | 4A | Central (27-3) | Bob McBeth | La Grande (17-10) | Aaron Mills | 56-47 | Gill Coliseum, Corvallis |
| | 3A | Horizon Christian (26-4) | Dave Brown | Dayton (27-3) | Ron Hop | 53-44 | Cone Field House, Salem |
| | 2A | Portland Christian (22-8) | Jeff Huston | Central Linn (26-1) | Bart Rothenberger | 54-38 | Pendleton Convention Center |
| | 1A | Columbia Christian (23-9) | Jim Flint | Wallowa (22-4) | Warren Wilson | 47-40 | Baker HS |
| 2011 | 6A | Jesuit (26-2) | Gene Potter | Westview (21-7) | Pat Coons | 60-46 | Rose Garden, Portland |
| | 5A | Corvallis (27-1) | Greg Garrison | Benson (23-4) | Troy Berry | 79-73 (2 OT) | Matthew Knight Arena, Eugene |
| | 4A | Phoenix (23-6) | Glenn Johannes | Cottage Grove (24-4) | Bart Pollard | 59-44 | Gill Coliseum, Corvallis |
| | 3A | Horizon Christian (27-4) | Dave Brown | Dayton (24-7) | Ron Hop | 58-44 | Marshfield HS / North Bend HS |
| | 2A | Western Mennonite (26-5) | Gary Hull | Central Linn (25-5) | Bart Rothenberger | 58-52 | Pendleton Convention Center |
| | 1A | Siletz Valley (22-5) | David Morgan | Triad (23-5) ^ | Jason Young | 70-56 | Baker HS |
| ^ Game forfeited by Triad. 2 nd place trophy not awarded. | | | | | | | |
| 2012 | 6A | Jesuit (26-2) | Gene Potter | Lake Oswego (22-6) | Mark Shoff | 52-42 | Rose Garden, Portland |
| | 5A | Corvallis (24-4) | Greg Garrison | Milwaukie (20-9) | Kyle Bracy | 63-51 | Matthew Knight Arena, Eugene |
| | 4A | Central (26-1) | Bob McBeth | Phoenix (25-6) | Glenn Johannes | 49-47 | Gill Coliseum, Corvallis |
| | 3A | Dayton (28-3) | Ron Hop | Horizon Christian, Tualatin (21-10) | Dave Brown | 58-35 | Marshfield HS / North Bend HS |
| | 2A | East Linn Christian (28-3) | Kyle Cowan | Western Mennonite (25-6) | Gary Hull | 36-32 | Pendleton Convention Center |
| | 1A | Horizon Christian, Hood River (28-4) | Darrin Lingel | McKenzie (29-1) | Mike Wiley | 58-46 | Baker HS |
| 2013 | 6A | West Linn (23-6) | Eric Viuhkola | Central Catholic (24-5) | Dan Munson | 45-41 | Rose Garden, Portland |
| | 5A | Jefferson (24-4) | Pat Strickland | Churchill (23-5) | Kelly Bokn | 59-53 | Matthew Knight Arena, Eugene |
| | 4A | North Valley (27-0) | Jeff Nelson | Cascade (26-2) | Steve Ball | 64-50 | Gill Coliseum, Corvallis |
| | 3A | Horizon Christian (26-2) | Dave Brown | Blanchet Catholic (27-5) | Jon Tromblay | 49-26 | Marshfield HS / North Bend HS |
| | 2A | Oakland (24-5) | Jeff Clark | Irrigon (28-1) | Jake McElligott | 60-54 | Pendleton Convention Center |
| | 1A | City Christian (29-2) | Bryan Lewellen | Horizon Christian, Hood River (30-1) | Darrin Lingel | 41-39 | Baker HS |
| 2014 | 6A | West Linn (25-4) | Eric Viuhkola | Sheldon (22-7) | Dan Clark | 67-56 | Rose Garden, Portland |
| | 5A | Jefferson (26-1) | Pat Strickland | Churchill (25-3) | Kelly Bokn | 69-64 | Matthew Knight Arena, Eugene |
| | 4A | Philomath (24-3) | Blake Ecker | La Salle Prep (22-4) | Jared Curtiss | 48-39 | Gill Coliseum, Corvallis |
| | 3A | Valley Catholic (27-2) | Joel Sobotka | De La Salle North Catholic (23-7) | James Broadous II | 62-50 | Marshfield HS / North Bend HS |
| | 2A | Irrigon (26-2) | Jake McElligott | Oakland (23-6) | Jeff Clark | 42-21 | Pendleton Convention Center |
| | 1A | Columbia Christian (25-5) | Aaron McKinney | Horizon Christian, Hood River (25-2) | Darrin Lingel | 68-49 | Baker HS |
| 2015 | 6A | West Linn (25-4) | Eric Viuhkola | Jesuit (24-5) | Gene Potter | 68-57 | Chiles Center, Portland |
| | 5A | Silverton (22-4) | Steve Roth | Wilsonville (24-4) | Chris Roche | 33-32 | Gill Coliseum, Corvallis |
| | 4A | Scappoose (24-5) | Rahim Tufts | North Marion (20-9) | Tully Wagner | 51-48 | Liberty HS, Hillsboro |
| | 3A | Dayton (29-1) | Ron Hop | Horizon Christian, Tualatin (23-8) | Dave Brown | 53-43 | Marshfield HS, Coos Bay |
| | 2A | Irrigon (27-1) | Mitch Thompson | Toledo (25-5) | Eddie Townsend | 65-53 | Pendleton Convention City |
| | 1A | Country Christian (29-1) | Doug Nofziger | Nixyaaii (22-7) | Shane Rivera | 61-53 | Baker HS |
| 2016 | 6A | West Linn (26-3) | Eric Viuhkola | South Medford (27-3) | Dennis Murphy | 74-48 | Chiles Center, Portland |
| | 5A | Wilsonville (25-3) | Chris Roche | Liberty (20-8) | Aaron Johnson | 47-31 | Gill Coliseum, Corvallis |
| | 4A | Philomath (25-3) | Blake Ecker | Seaside (23-4) | Bill Westerholm | 55-45 | Liberty HS, Hillsboro |
| | 3A | St. Mary's (23-6) | Greg Conway | De La Salle North Catholic (24-5) | James Broadous II | 59-53 | Marshfield HS, Coos Bay |
| | 2A | Vernonia (28-1) | David Weller | Regis (25-4) | Tony Miller | 57-49 | Pendleton Convention Center |
| | 1A | Sherman (26-4) | Bill Blevins | Columbia Christian (20-7) | Vince Hicks | 53-45 | Baker HS |
| 2017 | 6A | Jefferson (27-1) | Pat Strickland | Clackamas (24-5) | Ryan King | 70-67 | Chiles Center, Portland |
| | 5A | Wilsonville (27-1) | Chris Roche | Churchill (23-5) | Kelly Bokn | 51-43 | Gill Coliseum, Corvallis |
| | 4A | Seaside (24-1) | Bill Westerholm | Valley Catholic (20-6) | Joel Sobotka | 71-63 | Forest Grove HS |
| | 3A | Dayton (28-1) | Ron Hop | De La Salle North Catholic (22-6) | James Broadous II | 64-55 | Marshfield HS, Coos Bay |
| | 2A | Santiam (24-4) | JD Hill | Stanfield (22-2) | Jason Sperr | 57-54 | Pendleton Convention Center |
| | 1A | Sherman (26-5) | Bill Blevins | Powder Valley (23-5) | Michael Lieuallen | 78-57 | Baker HS |
| 2018 | 6A | Grant (25-4) | Robert Key | Jefferson (26-4) | Pat Strickland | 63-62 | Chiles Center, Portland |
| | 5A | Thurston (22-6) | Blaine Liberatore | Wilsonville (21-7) | Chris Roche | 54-36 | Gill Coliseum, Corvallis |
| | 4A | Seaside (22-5) | Bill Westerholm | Valley Catholic (22-7) | Joel Sobotka | 48-44 | Forest Grove HS |
| | 3A | De La Salle North Catholic (27-1) | James Broadous II | Dayton (26-4) | Ron Hop | 68-55 | Marshfield HS, Coos Bay |
| | 2A | Columbia Christian (30-1) | Bart Valentine | Western Mennonite (26-4) | Gary Hull | 65-61 | Pendleton Convention Center |
| | 1A | Pacific (29-2) | Ben Stallard | Prairie City (23-4) | Sam Workman | 73-50 | Baker HS |
| 2019 | 6A | Jesuit (23-6) | Gene Potter | Jefferson (24-6) | Pat Strickland | 71-66 | Chiles Center, Portland |
| | 5A | Wilsonville (27-2) | Chris Roche | Churchill (23-5) | Kelly Bokn | 67-58 | Gill Coliseum, Corvallis |
| | 4A | Banks (27-3) | Marcus Roche | Seaside (24-4) | Bill Westerholm | 62-56 | Forest Grove HS |
| | 3A | De La Salle North Catholic (25-4) | James Broadous II | Amity (19-9) | Scott Nelson | 58-45 | Marshfield HS, Coos Bay |
| | 2A | Western Christian (29-1) | Gary Hull | Columbia Christian (28-3) | Bart Valentine | 61-48 | Pendleton Convention Center |
| | 1A | Nixyaawii (28-2) | Shane Rivera | Trinity Lutheran (24-6) | Kyle Gilbert | 59-42 | Baker HS |



Northwest Sports Photography



1.800.446.5758



Proud to be the
Official Photographer
of the

OSAA STATE BASKETBALL CHAMPIONSHIPS

Action, Team and Award Photos

will be available for viewing and purchase onsite and online at

www.4NSP.com



ALL-TIME CLASSIFICATIONS COMBINED BOYS BASKETBALL TOURNAMENT RECORDS

(Prior to 2007, classifications were 4A, 3A, 2A, 1A)

TEAM

FIELD GOALS –

Att., Game – 104, Pleasant Hill (made 18) vs. Knappa – 1944 (2A)
Att., Tour – 247, St. Mary's (made 81) – 1993 (2A)
Made, Game – 45, Prospect vs. Wasco County – 1970 (2A)
45, Weston-McEwen (of 82) vs. Sacred Heart (KF) – 1975 (2A)
Made, Tour – 100, Griswold (of 228) – 1985 (1A)
100, Portland Adventist (of 217) – 1996 (2A)
High Pct., Game – .741, Corbett (20-27) vs. Colton – 1994 (2A)
High Pct., Tour – .604, Knappa (67-111) – 1988 (2A)
3 pt. Att., Game – 36, Powder Valley (made 6) vs. Columbia Christian – 2010 (1A)
3 pt. Att., Tour – 84, Newport (made 33) – 2018 (4A)
84, Days Creek (made 26) – 2019 (1A)
3 pt. Made, Game – 15, Mohawk (of 26) vs. Jordan Valley – 2002 (1A)
15, Portland Christian (of 20) vs. Western Mennonite – 2008 (2A)
15, Dayton (of 30) vs. Horizon Christian – 2017 (3A)
3 pt. Made, Tour – 33, Newport (of 84) – 2018 (4A)
High 3-pt. Pct., Game – .889, South Medford (8-9) vs. Lake Oswego – 2007 (6A)
High 3-pt. Pct., Tour – .643, Blanchet Catholic (9-14) – 2001 (1A)

FREE THROWS –

Att., Game – 59, La Salle (made 36) vs. Henley – 1981 (3A)
Att., Tour – 139, Burns (made 107) – 1980 (AA)
Made, Game – 44, Burns (of 51) vs. Sherwood – 1980 (3A)
Made, Tour – 107, Burns (of 139) – 1980 (AA)
High Pct., Game – 1.000, Regis (16-16) vs. St. Mary's – 2005 (2A)
High Pct., Tour – .904, Wilsonville (47-52) – 2014 (5A)

POINTS –

High, Game – 111, Philomath vs. Coquille (111-74) – 1989 (3A)
High, Game (Both Teams) – 191, Creswell vs. Sutherlin (100-91) – 1969 (3A)
191, Wilson vs. West Albany (104-87) – 1991 (4A)
High, Tour – 268, North Clackamas Christian – 1986 (2A)
Low, Game – 5, Pilot Rock vs. Independence (5-18) – 1924 (4A)

REBOUNDS –

High, Game – 77, Medford vs. Tillamook – 1961 (4A)
High, Tour – 162, Canyonville Bible Academy – 1985 (1A)

BLOCKED SHOTS –

High, Game – 17, Prairie City vs. Elkton – 1995 (1A)
High, Tour – 27, Crater – 2019 (1A)

ASSISTS –

High Game – 28, Weston-McEwen vs. Sacred Heart (KF) – 1975 (2A)
High, Tour – 64, Harrisburg – 1988 (5A)

STEALS –

High, Game – 24, Benson vs. Putnam – 1990 (4A)
24, Paisley vs. Alsea – 1995 (1A)
High, Tour – 59, Paisley – 1995 (1A)

INDIVIDUAL

FIELD GOALS –

Att., Game – 40, Gary Ladd, Jefferson (made 12) vs. McNary – 1968 (4A)
Att., Tour – 95, Trenton Dixon, Powder Valley (made 42) – 2010 (1A)
Made, Game – 24, Wade Halbrook, Lincoln (of 36) vs. Central Catholic – 1952 (4A)
Made, Tour – 45, Bob Hunt, Knappa (of 84) – 1957 (2A)
High Pct., Game – 1.000, Tracy Miller, Warrenton (11-11) vs. St. Mary's – 1981 (2A)
1.000, Todd Marr, Enterprise (11-11) vs. St. Mary's – 1988 (2A)
High Pct., Tour – .864, Stuart Tonack, Portland Adventist (19-22) – 2016 (3A)
3-pt. Att., Game – 22, Jailan Conboy, Lone (made 8) vs. Triangle Lake – 2014 (1A)
3-pt. Att., Tour – 44, Joe Justesen, Sherman (made 8) – 1991 (1A)
3-pt. Made, Game – 9, Devin Banks, McKenzie (of 15) vs. North Clackamas Christian – 2004 (1A)
3-pt. Made, Tour – 17, Devin Banks, McKenzie (of 28) – 2004 (1A)
High 3-pt. Pct., Game – 1.000, Andy Dobner, Grants Pass (5-5) vs. Jesuit – 2001 (4A)
High 3-pt. Pct., Tour – .889, Kevin Brazille, North Valley (8-9) – 2013 (4A)

FREE THROWS –

Att., Game – 23, Jon Hildebrandt, Dayton (made 19) vs. Heppner – 2002 (2A)
Att., Tour – 50, Jon Hildebrandt, Dayton (made 42) – 2002 (2A)
Made, Game – 19, Jon Hildebrandt, Dayton (of 23) vs. Heppner – 2002 (2A)
19, Elijah Gonzales, South Salem (of 22) vs. West Linn – 2017 (6A)
Made, Tour – 42, Jon Hildebrandt, Dayton (of 50) – 2002 (2A)
42, Tim Wittrock, Burns (of 46) – 1980 (AA)
High Pct., Game – 1.000, Josh Nelson, Christ's Center (17-17) vs. Prairie City – 1998 (1A)
High Pct., Tour – 1.000, Monte McDonald, Mohawk (13-13) – 1969 (2A)
1.000, Terry Boesel, Powder Valley (13-13) – 1979 (1A)

POINTS –

High, Game – 52, Jeremy Rosenbalm, Arlington – 2004 (1A)
High, Tour – 114, Bob Hunt, Knappa – 1957 (2A)

REBOUNDS –

High, Game – 34, Wade Halbrook, Lincoln vs. Salem – 1952 (4A)
High, Tour – 64, Bob Hunt, Knappa – 1957 (2A)

BLOCKED SHOTS –

High, Game – 10, Nate Bittle, Crater vs. Pendleton – 1997 (5A)
High, Tour – 21, Nate Bittle, Crater – 2019 (5A)

ASSISTS –

High, Game – 15, Brent Eddy, Enterprise vs. Gervais – 1992 (2A)
High, Tour – 30, Malik Morgan, Churchill – 2014 (5A)

STEALS –

High Game – 11, Austin Powers, Madison vs. Sherwood – 2014 (5A)
High, Tour – 20, Austin Powers, Madison – 2014 (5A)

6A BOYS BASKETBALL TOURNAMENT RECORDS

(Since 2007)

TEAM

FIELD GOALS —

Att., Game — 74, Grant (made 25) vs. West Salem — 2017
Att., Tour — 183, Barlow (made 73) — 2018
Made, Game — 37, Jefferson (of 71) vs. Grant — 2019
Made, Tour — 90, West Linn (of 166) — 2016
High Pct., Game — .650, South Medford (26-40) vs. Central Catholic — 2014
High Pct., Tour — .581, South Medford (75-129) — 2007
3-Pt. Att., Game — 34, Lincoln (made 6) vs. South Eugene — 2010
3-Pt. Att., Tour — 87, Barlow (made 29) — 2018
3-Pt. Made, Game — 14, Jefferson (of 28) vs. West Linn — 2016
3-Pt. Made, Tour — 29, Barlow (of 87) — 2018
High 3-Pt. Pct., Game — .889, South Medford (8-9) vs. Lake Oswego — 2007
High 3-Pt. Pct., Tour — .487, Jesuit (19-39) — 2011

FREE THROWS —

Att., Game — 42, Lincoln (made 33) vs. West Linn — 2011
Att., Tour — 87, Lincoln (made 51) — 2011
Made, Game — 33, Lincoln (of 42) vs. West Linn — 2011
Made, Tour — 61, David Douglas (of 81) — 2012
High Pct., Game — 1.000, West Linn (4-4) vs. Lake Oswego — 2013
High Pct., Tour — .852, West Salem (23-27) — 2018

POINTS —

High, Game — 89, West Linn vs. North Medford (89-59) — 2017
High, Game (Both Teams) — 161, Grant vs. Central Catholic (83-78) — 2019
High, Tour — 233, West Linn — 2016
Low, Game — 25, Sheldon vs. Lake Oswego — 2007
Low, Game (Both Teams) — 53, Lake Oswego vs. Sheldon (28-25) — 2007
High Margin, Game — 39, Lake Oswego vs. Oregon City (69-30) — 2019

REBOUNDS —

High, Game — 47, Westview vs. Jesuit — 2010
47, Jesuit vs. Newberg — 2010
47, West Linn vs. Central Catholic — 2012
47, Jesuit vs. Sunset — 2013
47, Grant vs. West Salem — 2017
47, Jefferson vs. South Salem — 2019
High, Tour — 134, Jefferson — 2019

BLOCKED SHOTS —

High, Game — 9, Jefferson vs. Grant — 2019
High, Tour — 18, Jesuit — 2010

ASSISTS —

High, Game — 20, South Salem vs. Jefferson — 2016
20, Jefferson vs. Grant — 2019
High, Tour — 46, West Linn — 2017

STEALS —

High, Game — 17, Central Catholic vs. South Medford — 2014
High, Tour — 32, Grant

CHAMPIONSHIP GAME —

High Score — 74, West Linn vs. South Medford (74-48) — 2016
High Score (Both Teams) — 137, Jefferson vs. Clackamas (70-67) — 2017
137, Jesuit vs. Jefferson (71-66) — 2019
Low Score — 41, Central Catholic vs. West Linn (41-45) — 2013
Low Score (Both Teams) — 86, West Linn vs. Central Catholic (45-41) — 2013
High Margin — 26, West Linn vs. South Medford (74-48) — 2016

INDIVIDUAL

FIELD GOALS —

Att., Game — 29, Alexis Angeles, Tualatin (made 16) vs. Barlow — 2018
Att., Tour — 63, Payton Pritchard, West Linn (made 30) — 2016
Made, Game — 16, Alexis Angeles, Tualatin (of 29) vs. Barlow — 2018
Made, Tour — 31, Jordan Carter, McKay (of 58) — 2010
High Pct., Game — .900, Brandon Troxel, Tualatin (9-10) vs. Barlow — 2008
High Pct., Tour — .718, Kevin Love, Lake Oswego (28-39) — 2007
3-Pt. Att., Game — 14, Aiden Williams, Jesuit (made 2) vs. Tualatin — 2018
12, Bradley Seehawer, Roseburg (made 4) vs. West Linn — 2011
12, Payton Pritchard, West Linn (made 7) vs. Jesuit — 2016
12, Elijah Gonzales, Clackamas (made 6) vs. West Salem — 2017
3-Pt. Att., Tour — 30, Payton Pritchard, West Linn (made 12) — 2016
3-Pt. Made, Game — 7, Payton Pritchard, West Linn (of 12) vs. Jesuit — 2016
3-Pt. Made, Tour — 12, Payton Pritchard, West Linn (of 30) — 2016
12, Aiden Williams, Jesuit (of 25) — 2019
High 3-Pt. Pct., Game — .857, Mike James, Grant (6-7) vs. McKay — 2007
High 3-Pt. Pct., Tour — .700, Ben College, Central Catholic (7-10) — 2014

FREE THROWS —

Att., Game — 22, Elijah Gonzales, Clackamas (made 19) vs. West Linn — 2017
Att., Tour — 35, Gavin Hoffman, Lincoln (made 16) — 2011
Made, Game — 19, Elijah Gonzales, Clackamas (of 22) vs. West Linn — 2017
Made, Tour — 29, Kevin Love, Lake Oswego (of 33) — 2007
High Pct., Game — 1.000, Collin Huun, South Salem (11-11) vs. Sunset — 2014
High Pct., Tour — .957, Anthony Mathis, West Linn (22-23) — 2014

POINTS —

High, Game — 42, Jordan Carter, McKay vs. Newberg — 2010
High, Tour — 93, Elijah Gonzales, Clackamas — 2017

REBOUNDS —

High, Game — 21, Kevin Love, Lake Oswego vs. Westview — 2007
High, Tour — 48, Nate Rawlins-Kibonge, Jefferson — 2019

BLOCKED SHOTS —

High, Game — 7, Collin Spickerman, Jesuit vs. David Douglas — 2012
7, Collin Spickerman, Jesuit vs. Lake Oswego — 2012
7, Eli Liningier, South Eugene vs. South Salem — 2015
High, Tour — 15, Collin Spickerman, Jesuit — 2012

ASSISTS —

High, Game — 11, Jaden Nielsen-Skinner, South Salem vs. Jefferson — 2016
High, Tour — 18, Mario Shonkwiler, West Linn — 2011
18, Jaden Nielsen-Skinner, South Salem — 2016

STEALS —

High, Game — 8, Jarrod Howard, West Linn vs. Grant — 2013
High, Tour — 11, Payton Pritchard, West Linn — 2015

Barlow Bruins



VARSITY ROSTER

| No. | Name | Pos. | Yr. | Ht. |
|-----|-----------------|------|-----|-----|
| 3 | Carter Serafini | G | 12 | 5-7 |
| 4 | Trevor Jones | F | 12 | 6-2 |
| 5 | Owen Arn | G | 11 | 6-0 |
| 10 | Nathan Amadio | F | 12 | 6-2 |
| 11 | Connor Hills | G | 10 | 5-7 |
| 12 | Wilson Weber | F | 11 | 6-0 |
| 13 | Evan Inglesby | G | 12 | 6-4 |
| 15 | Jesse White | G | 12 | 6-1 |
| 21 | Logan Lafey | F | 11 | 6-2 |
| 22 | Josh Nomie | G | 12 | 5-9 |
| 24 | Joey Wolcott | F | 12 | 6-4 |
| 30 | Drake Payne | G | 12 | 6-0 |
| 33 | Jaren Hunter | F | 12 | 6-2 |

SCHEDULE (20-6)

| Date | Opponent | Result |
|-------|-------------------------------|----------|
| 12/6 | @ West Linn | L 86-95 |
| 12/10 | @ Jesuit | L 38-63 |
| 12/13 | vs. Sprague | W 68-51 |
| 12/17 | @ Tualatin | W 83-63 |
| 12/26 | vs. Churchill | L 52-55 |
| 12/27 | @ West Linn | L 59-61 |
| 12/28 | @ Grant | L 62-64 |
| 12/29 | vs. Battle Ground (WA) {11-8} | W 78-53 |
| 1/7 | vs. Lake Oswego | W 60-54 |
| 1/10 | vs. Centennial | W 92-30 |
| 1/14 | @ Central Catholic | L 55-75 |
| 1/17 | @ Gresham | W 76-49 |
| 1/20 | vs. Grant | W 79-55 |
| 1/22 | vs. Clackamas | W 69-52 |
| 1/24 | @ David Douglas | W 63-47 |
| 1/28 | @ Reynolds | W 83-64 |
| 1/31 | @ Sandy | W 75-58 |
| 2/5 | vs. Central Catholic | W 61-52 |
| 2/7 | @ Centennial | W 62-48 |
| 2/11 | @ Clackamas | W 82-76 |
| 2/14 | vs. Gresham | W 60-42 |
| 2/18 | vs. Reynolds | W 101-44 |
| 2/21 | vs. David Douglas | W 80-51 |
| 2/26 | vs. Sandy | W 62-56 |
| 3/4 | vs. West Salem | W 76-59 |
| 3/7 | vs. Westview | W 54-43 |
| 3/12 | @ Jefferson, Portland | |

League 6A-4 Mt. Hood Conference
Location Gresham
Mascot Bruins
Colors Blue, Gold



Head Coach Tom Johnson
Assistant Coaches Trent Inglesby, Gene Saling

Superintendent Dr. Katrise Perera
Principal Bruce Schmidt
Athletic Director Greg Kelley

Athletic Trainer Cameron Purington



The OSAA requests that you model good sportsmanship by refraining from derogatory cheers, chants, or behavior toward students, coaches, officials, or other spectators. Speak out if you see inappropriate behavior by immediately notifying event management staff. Together, we can provide a safe and respectful environment for all.

Central Catholic Rams



VARSITY ROSTER

| No. | Name | Pos. | Yr. | Ht. |
|-----|-------------------------|------|-----|------|
| 0 | DeRay Seamster | G | 12 | 6-2 |
| 1 | Sean Chris Tresvant | G | 9 | 5-10 |
| 2 | A.J. Robertson | G | 11 | 5-10 |
| 3 | Quinn Hallinan | G | 11 | 5-10 |
| 5 | Jordan King | W | 10 | 6-3 |
| 10 | Benjamin Prince Kouadio | W | 11 | 6-4 |
| 11 | Darius Gakwasi | G | 11 | 6-5 |
| 12 | Aidan Slater | W | 10 | 6-1 |
| 13 | Gaige Ainslie | F | 12 | 6-8 |
| 14 | Luke Johnson | F | 10 | 6-7 |
| 15 | Riley Williams | W | 9 | 6-6 |
| 20 | Fedi Aniefuna | P | 12 | 6-4 |
| 21 | Avery Conner | W | 12 | 6-4 |
| 22 | Isaiah Amato | G | 12 | 6-5 |

SCHEDULE (19-7)

| Date | Opponent | Result |
|-------|----------------------------------|---------|
| 12/7 | vs. North Medford | W 60-51 |
| 12/13 | vs. Jesuit | W 69-59 |
| 12/17 | vs. West Linn | W 85-65 |
| 12/20 | vs. Lake Oswego | W 74-60 |
| 12/26 | vs. Grant | W 78-34 |
| 12/27 | vs. Mater Dei (CA) {21-6} | L 57-70 |
| 12/28 | @ Churchill | W 59-40 |
| 12/30 | vs. Bishop Gorman (NV) {22-3} | L 46-59 |
| 1/7 | @ Sunset | W 72-62 |
| 1/9 | vs. Gresham | L 63-72 |
| 1/14 | vs. Barlow | W 75-55 |
| 1/17 | @ Clackamas | L 61-71 |
| 1/20 | @ De LaSalle Concord (CA) {18-7} | L 47-56 |
| 1/22 | @ David Douglas | W 62-37 |
| 1/24 | @ Reynolds | W 86-48 |
| 1/28 | vs. Sandy | W 82-53 |
| 1/31 | vs. Centennial | W 87-30 |
| 2/5 | @ Barlow | L 52-61 |
| 2/7 | @ Gresham | W 76-49 |
| 2/11 | vs. David Douglas | W 67-43 |
| 2/14 | vs. Clackamas | L 55-62 |
| 2/18 | @ Sandy | W 60-59 |
| 2/21 | vs. Reynolds | W 88-27 |
| 2/26 | @ Centennial | W 77-21 |
| 3/4 | vs. Canby | W 68-49 |
| 3/7 | vs. Tigard | W 58-43 |
| 3/12 | @ Clackamas | |

League 6A-4 Mt. Hood Conference
Location Portland
Mascot Rams
Colors Cardinal, Gold, White

Principal Danyelle Ramsey
Athletic Director Laura Jaeger
Athletic Trainer Erin LeRoy



Head Coach David Blue
Assistant Coaches Earl Martin, Will Shelby, Jordan Blue, David Duong



The OSAA requests that you model good sportsmanship by refraining from derogatory cheers, chants, or behavior toward students, coaches, officials, or other spectators. Speak out if you see inappropriate behavior by immediately notifying event management staff. Together, we can provide a safe and respectful environment for all.

Clackamas Cavaliers



VARSITY ROSTER

| No. | Name | Pos. | Yr. | Ht. |
|-----|-------------------|------|-----|------|
| 2 | Austin Keel | W | 11 | 6-2 |
| 5 | Daniel Mahler | W | 12 | 6-2 |
| 10 | KJ Horsley | G | 11 | 6-1 |
| 11 | Damon Erickson | G | 11 | 6-3 |
| 12 | Ben Gregg | F | 11 | 6-9 |
| 15 | Jack Dorn | W | 11 | 6-3 |
| 20 | Michael Vorobets | W | 11 | 6-3 |
| 21 | Derek Di'Grigorio | F | 12 | 6-4 |
| 25 | Nate Newton | G | 10 | 5-10 |
| 32 | Jackson Jaha | G | 10 | 6-1 |
| 34 | Ryan Lewis | F | 11 | 6-3 |
| 44 | Sam Wong | G | 10 | 6-0 |
| 55 | Izzy Baker | F | 11 | 6-4 |

SCHEDULE (21-5)

| Date | Opponent | Result |
|-------|-----------------------------|---------|
| 12/14 | vs. South Eugene | W 67-42 |
| 12/20 | @ Bend | W 58-33 |
| 12/21 | @ Mountainside | L 56-67 |
| 12/26 | @ Crater | L 54-71 |
| 12/27 | @ Battle Ground (WA) {11-8} | W 63-59 |
| 12/28 | @ Wilsonville | W 63-53 |
| 12/30 | vs. West Linn | W 75-60 |
| 1/3 | @ Southridge | W 77-31 |
| 1/7 | @ Jesuit | L 46-55 |
| 1/10 | vs. Sandy | W 71-58 |
| 1/14 | vs. Centennial | W 74-33 |
| 1/17 | vs. Central Catholic | W 71-61 |
| 1/20 | vs. Crater | W 69-57 |
| 1/22 | @ Barlow | L 52-69 |
| 1/24 | @ Gresham | W 72-49 |
| 1/28 | vs. David Douglas | W 64-47 |
| 1/31 | @ Reynolds | W 79-40 |
| 2/5 | @ Centennial | W 71-33 |
| 2/7 | @ Sandy | W 75-46 |
| 2/11 | vs. Barlow | L 76-82 |
| 2/14 | @ Central Catholic | W 62-55 |
| 2/18 | @ David Douglas | W 81-67 |
| 2/21 | vs. Gresham | W 85-55 |
| 2/26 | vs. Reynolds | W 87-53 |
| 3/4 | vs. Mountain View | W 70-45 |
| 3/7 | vs. Grant | W 69-66 |
| 3/12 | vs. Central Catholic | |

League 6A-4 Mt. Hood Conference
Location Clackamas
Mascot Cavaliers
Colors Red, Black

Superintendent Matt Utterback
Principal Tammy O'Neill
Athletic Director Vicki Nelms

Athletic Trainer Heidi Loebach



The OSAA requests that you model good sportsmanship by refraining from derogatory cheers, chants, or behavior toward students, coaches, officials, or other spectators. Speak out if you see inappropriate behavior by immediately notifying event management staff. Together, we can provide a safe and respectful environment for all.



Head Coach Cameron Mitchell
Assistant Coaches Terrell Malley, Brian McGill

Jefferson, Portland Democrats



VARSITY ROSTER

| No. | Name | Pos. | Yr. | Ht. |
|------|-----------------------|------|-----|------|
| 0 | Keshawn Hall | G | 11 | 6-0 |
| 1 | Marquis "Mookie" Cook | G/F | 9 | 6-7 |
| 2/5 | Tre Anderson | G/F | 11 | 6-4 |
| 3 | Trejon' Williams | G | 10 | 6-0 |
| 4 | Nate Rawlins-Kibonge | F | 11 | 6-7 |
| 5/22 | Kamron Robinson | F | 11 | 6-9 |
| 10 | Jason Davis | F | 11 | 6-3 |
| 11 | Dondrae Fair | G | 10 | 6-0 |
| 12 | Amare Adams | G | 9 | 5-10 |
| 20 | Jalen Adams | G | 11 | 6-3 |
| 32 | Lamar Washington | G | 10 | 6-4 |

SCHEDULE (23-4)

| Date | Opponent | Result |
|-------|------------------------------------|---------|
| 12/4 | @ Wilson | W 80-60 |
| 12/18 | @ Damien (HI) {10-12} | W 75-49 |
| 12/19 | vs. Mount Vernon (NY) {11-8} | W 65-54 |
| 12/20 | vs. Oak Hill Academy (VA) {32-3} | L 61-79 |
| 12/21 | @ Long Island Lutheran (NY) {19-3} | L 49-80 |
| 12/26 | @ Battle Ground (WA) {11-8} | W 82-54 |
| 12/27 | @ Crater | W 76-58 |
| 12/28 | @ Eastside Catholic (WA) {17-2} | L 39-58 |
| 12/30 | @ Norcross (GA) {22-2} | L 55-69 |
| 1/7 | vs. Cleveland | W 63-48 |
| 1/9 | @ Lincoln | W 83-38 |
| 1/11 | @ Grant | W 61-50 |
| 1/17 | @ Roosevelt | W 78-61 |
| 1/20 | vs. Westview | W 61-34 |
| 1/24 | vs. Franklin | W 80-58 |
| 1/25 | @ Benson | W 81-50 |
| 1/28 | vs. Madison | W 90-63 |
| 1/31 | vs. Grant | W 53-48 |
| 2/4 | vs. Wilson | W 93-68 |
| 2/6 | @ Cleveland | W 78-74 |
| 2/7 | vs. Lincoln | W 88-46 |
| 2/11 | vs. Roosevelt | W 82-53 |
| 2/18 | @ Franklin | W 76-61 |
| 2/21 | vs. Benson | W 94-56 |
| 2/25 | @ Madison | W 96-44 |
| 3/4 | vs. Sandy | W 71-62 |
| 3/7 | vs. Sherwood | W 86-69 |
| 3/12 | vs. Barlow | |

League 6A-1 Portland Interscholastic League
Location Portland
Mascot Democrats
Colors Blue, Gold



Head Coach Pat Strickland
Assistant Coaches Dale Baugh, Ray Adams, Sean Brownhill

Superintendent Guadalupe Guerrero
Principal Margaret Calvert
Athletic Director Neil Barrett

Athletic Trainer Cameron Hays

Sportsmanship We encourage you to model good sportsmanship by refraining from derogatory cheers, chants, or behavior toward students, coaches, officials, or other spectators. Speak out if you see inappropriate behavior by immediately notifying event management staff. Together, we can provide a safe and respectful environment for all.

Jesuit Crusaders



VARSITY ROSTER

| No. | Name | Pos. | Yr. | Ht. |
|-----|--------------------|------|-----|------|
| 1 | James Lang | G | 11 | 5-11 |
| 3 | Roy Bunn | G | 11 | 5-9 |
| 5 | Liam Rutledge | W | 11 | 6-3 |
| 10 | Matt Levis | G | 12 | 6-0 |
| 11 | Connor Kollas | W | 12 | 6-3 |
| 12 | Joey Davies | G | 12 | 5-9 |
| 15 | Mike Brittingham | G | 11 | 5-11 |
| 20 | Johnny rice | W | 12 | 6-1 |
| 22 | Spencer McKelligon | P | 10 | 6-2 |
| 23 | Aidan Corbitt | W | 12 | 6-3 |
| 24 | Kyle Ferrero | P | 12 | 6-3 |
| 25 | Charlie Pickard | P | 11 | 6-4 |
| 30 | Jimmy Ray | P | 12 | 6-2 |

SCHEDULE (22-4)

| Date | Opponent | Result |
|-------|---------------------------|---------|
| 12/6 | @ Roosevelt | W 80-77 |
| 12/10 | vs. Barlow | W 63-38 |
| 12/13 | @ Central Catholic | L 59-69 |
| 12/18 | @ Lake Oswego | W 47-46 |
| 12/20 | vs. West Linn | W 68-61 |
| 12/26 | vs. Mater Dei (CA) {21-6} | L 52-77 |
| 12/27 | @ Grant | W 60-46 |
| 12/28 | vs. West Linn | L 45-56 |
| 12/29 | @ Wilsonville | W 56-49 |
| 1/3 | @ Sprague | W 57-39 |
| 1/7 | vs. Clackamas | W 55-46 |
| 1/11 | @ Sheldon | W 59-36 |
| 1/14 | @ Southridge | W 71-51 |
| 1/17 | @ Mountainside | W 67-47 |
| 1/21 | vs. Sunset | W 68-47 |
| 1/24 | vs. Aloha | W 64-37 |
| 1/29 | vs. Beaverton | W 46-44 |
| 2/4 | @ Westview | W 54-46 |
| 2/7 | vs. Southridge | W 74-59 |
| 2/11 | vs. Mountainside | W 55-45 |
| 2/14 | @ Sunset | W 75-58 |
| 2/18 | @ Aloha | W 56-45 |
| 2/21 | @ Beaverton | W 62-47 |
| 2/28 | vs. Westview | L 47-52 |
| 3/4 | vs. Century | W 76-43 |
| 3/7 | vs. Summit | W 61-55 |
| 3/12 | vs. West Linn | |

League 6A-2 Metro League
Location Portland
Mascot Crusaders
Colors Green, Gold

Principal Paul Hogan
Athletic Director Mike Hughes
Athletic Trainer Jen Adams



Head Coach Gene Potter
Assistant Coaches Daniel Feest, Steve Rolph



The OSAA requests that you model good sportsmanship by refraining from derogatory cheers, chants, or behavior toward students, coaches, officials, or other spectators. Speak out if you see inappropriate behavior by immediately notifying event management staff. Together, we can provide a safe and respectful environment for all.

Lake Oswego Lakers



VARSITY ROSTER

| No. | Name | Pos. | Yr. | Ht. |
|-------|---------------|------|-----|-----|
| 1/13 | Carson Reno | G | 10 | |
| 2 | Noah Kniss | G | 12 | 6-0 |
| 3 | Grayden Smith | G | 11 | 6-4 |
| 4 | Jack Chlumak | P | 12 | 6-4 |
| 5 | Casey Graver | G | 12 | 6-4 |
| 10 | Trace Salton | P | 11 | 6-5 |
| 15 | Sam Herron | G | 12 | 6-1 |
| 20/22 | Sam Abere | G | 12 | 6-3 |
| 21 | Grant Brauner | P | 12 | 6-5 |
| 23 | Marcus Lee | G | 10 | |
| 24 | Jack Woolf | G | 11 | 6-4 |
| 30 | Ryan Hooper | G | 11 | |
| 32 | Jake Archambo | P | 12 | 6-5 |
| 33 | Kaden Wheeler | G | 12 | 6-2 |

SCHEDULE (18-8)

| Date | Opponent | Result |
|-------|-------------------------------|---------|
| 12/13 | @ Sheldon | W 66-48 |
| 12/14 | vs. North Medford | W 62-48 |
| 12/18 | vs. Jesuit | L 46-47 |
| 12/20 | @ Central Catholic | L 60-74 |
| 12/26 | vs. Bishop Gorman (NV) {22-3} | L 52-63 |
| 12/27 | @ Wilsonville | L 42-54 |
| 12/28 | @ Battle Ground (WA) {11-8} | W 54-48 |
| 12/29 | @ Grant | L 46-49 |
| 1/3 | @ Morningside (CA) {15-10} | W 64-53 |
| 1/4 | @ Westchester (CA) {18-8} | L 34-41 |
| 1/7 | @ Barlow | L 54-60 |
| 1/14 | @ Tualatin | W 65-50 |
| 1/17 | vs. Oregon City | W 48-31 |
| 1/20 | vs. Churchill | L 45-52 |
| 1/21 | @ Lakeridge | W 73-27 |
| 1/28 | vs. Tigard | W 68-65 |
| 1/31 | vs. Canby | W 59-48 |
| 2/5 | vs. West Linn | W 58-47 |
| 2/7 | vs. Tualatin | W 59-45 |
| 2/11 | @ Oregon City | W 51-45 |
| 2/14 | vs. Lakeridge | W 64-41 |
| 2/21 | @ Tigard | W 67-59 |
| 2/26 | @ Canby | W 74-46 |
| 2/28 | @ West Linn | W 65-57 |
| 3/4 | vs. Cleveland | W 44-28 |
| 3/7 | vs. South Eugene | W 75-57 |
| 3/12 | @ South Salem | |

League 6A-5 Three Rivers League
Location Lake Oswego
Mascot Lakers
Colors Navy, White

Superintendent Dr. Lora de la Cruz
Principal Rollin Dickinson
Athletic Director Brigham Baker

Athletic Trainer Ron Moore



The OSAA requests that you model good sportsmanship by refraining from derogatory cheers, chants, or behavior toward students, coaches, officials, or other spectators. Speak out if you see inappropriate behavior by immediately notifying event management staff. Together, we can provide a safe and respectful environment for all.



Head Coach Marshall Cho
Assistant Coaches Robert Smaller, TJ Dorado, Chris Farmer, Ryan Shepherd
Scorekeeper Mike Furey

South Salem Saxons



VARSITY ROSTER

| No. | Name | Pos. | Yr. | Ht. |
|-----|--------------------|------|-----|------|
| 0 | Jasper Phipps | G | 11 | 6-1 |
| 1 | Kieran Pruett | G | 12 | 5-10 |
| 3 | Trey Galbraith | G | 12 | 5-9 |
| 4 | Ian Huntington | G | 12 | 6-1 |
| 5 | John Rapp | G | 11 | 6-3 |
| 11 | Nick Zuro | F | 11 | 6-7 |
| 13 | B. Cole Hardy | G | 12 | 6-5 |
| 14 | Charlie Rapp | G | 9 | 5-11 |
| 22 | Emorej Lynk | G | 12 | 6-5 |
| 23 | Parker Johnson | F | 12 | 6-4 |
| 24 | Peyton Kreitzer | F | 12 | 6-3 |
| 33 | Isaac Gabriel | G | 12 | 6-3 |
| 35 | Drew Gertenrich | G | 11 | 6-4 |
| 41 | Antoine Pessonnier | G | 12 | 6-4 |

SCHEDULE (23-3)

| Date | Opponent | Result |
|-------|--------------------------------|---------|
| 12/6 | vs. Tualatin | W 69-63 |
| 12/10 | @ South Eugene | W 74-52 |
| 12/13 | vs. Oregon City | W 56-51 |
| 12/19 | @ West Albany | W 67-51 |
| 12/20 | @ Tigard | W 62-48 |
| 12/21 | @ Rancho Christian (CA) {20-5} | L 50-75 |
| 12/23 | vs. Lanier (GA) {19-5} | L 63-65 |
| 12/27 | @ Southridge | W 82-55 |
| 1/4 | vs. North Medford | W 67-49 |
| 1/10 | vs. Tigard | L 57-65 |
| 1/17 | vs. Sprague | W 72-49 |
| 1/23 | @ McKay | W 76-49 |
| 1/25 | @ Summit | W 77-61 |
| 1/28 | @ Mountain View | W 83-68 |
| 1/30 | vs. Bend | W 75-38 |
| 2/1 | vs. McNary | W 82-53 |
| 2/4 | @ West Salem | W 68-59 |
| 2/7 | vs. Mountain View | W 78-61 |
| 2/11 | @ Sprague | W 63-59 |
| 2/14 | vs. Summit | W 81-60 |
| 2/18 | vs. McKay | W 88-56 |
| 2/21 | vs. West Salem | W 66-49 |
| 2/25 | @ Bend | W 59-53 |
| 2/28 | @ McNary | W 85-50 |
| 3/4 | vs. Newberg | W 58-37 |
| 3/7 | vs. Oregon City | W 68-56 |
| 3/12 | vs. Lake Oswego | |

League 6A-6 Mountain Valley Conference
Location Salem
Mascot Saxons
Colors Columbia Blue, Scarlet



Head Coach Travis Brown
Assistant Coaches Jaren Jones, Kyle Atkinson, Dan McNally

Superintendent Christy Perry
Principal Lara Tiffin
Athletic Director Brian Armstrong
Athletic Trainer Abby Hendricks



The OSAA requests that you model good sportsmanship by refraining from derogatory cheers, chants, or behavior toward students, coaches, officials, or other spectators. Speak out if you see inappropriate behavior by immediately notifying event management staff. Together, we can provide a safe and respectful environment for all.

West Linn Lions



VARSITY ROSTER

| No. | Name | Pos. | Yr. | Ht. |
|-----|-------------------|------|-----|------|
| | Adam Simshauser | G | 11 | 5-10 |
| | Mitchell Duea | P | 11 | 6-6 |
| | Jake Hedberg | G | 11 | 6-2 |
| | Orion Forest | W | 11 | 6-3 |
| 1 | Micah Garrett | G | 12 | 6-3 |
| 2 | Colton Young | G | 12 | 6-2 |
| 3 | Jackson Shelstad | G | 9 | 5-11 |
| 5 | Grant Johnson | G | 12 | 5-11 |
| 10 | Mason VanBeenan | W/P | 10 | 6-8 |
| 11 | Gus Michelin | G/W | 12 | 6-5 |
| 12 | Parker Durbin | W/P | 12 | 6-3 |
| 13 | Bryson Crockett | G | 12 | 6-3 |
| 14 | Dane Cava | G | 12 | 5-10 |
| 15 | Joe Juhala | P | 12 | 6-7 |
| 21 | Kelton Herrick | G | 12 | 5-11 |
| 22 | Blake De Bisschop | P | 11 | 6-3 |
| 23 | Zeke Viuhkola | G | 10 | 6-0 |

SCHEDULE (17-9)

| Date | Opponent | Result |
|-------|------------------------|----------|
| 12/6 | vs. Barlow | W 95-86 |
| 12/10 | @ Roosevelt | L 73-75 |
| 12/13 | vs. Wilsonville | W 71-58 |
| 12/17 | @ Central Catholic | L 65-85 |
| 12/20 | @ Jesuit | L 61-68 |
| 12/26 | @ Norcross (GA) {22-2} | L 58-62 |
| 12/27 | vs. Barlow | W 61-59 |
| 12/28 | @ Jesuit | W 56-45 |
| 12/30 | @ Clackamas | L 60-75 |
| 1/7 | vs. Southridge | W 84-51 |
| 1/10 | vs. Westview | W 56-47 |
| 1/14 | @ Lakeridge | W 99-33 |
| 1/17 | vs. Tigard | W 95-64 |
| 1/20 | @ Cleveland | W 72-63 |
| 1/21 | vs. Tualatin | W 82-61 |
| 1/24 | @ Canby | W 61-49 |
| 1/28 | vs. Oregon City | W 72-61 |
| 2/5 | @ Lake Oswego | L 47-58 |
| 2/7 | vs. Lakeridge | W 105-63 |
| 2/11 | @ Tigard | L 74-84 |
| 2/14 | @ Tualatin | W 69-51 |
| 2/18 | vs. Canby | W 71-57 |
| 2/21 | @ Oregon City | L 46-61 |
| 2/28 | vs. Lake Oswego | L 57-65 |
| 3/4 | vs. McNary | W 95-52 |
| 3/7 | @ Mountainside | W 68-50 |
| 3/12 | @ Jesuit | |

League 6A-5 Three Rivers League
Location West Linn
Mascot Lions
Colors Green, Gold

Superintendent Kathy Ludwig
Principal Greg Neuman
Athletic Director Ian Lamont

Athletic Trainer Becca Feuerherd



The OSAA requests that you model good sportsmanship by refraining from derogatory cheers, chants, or behavior toward students, coaches, officials, or other spectators. Speak out if you see inappropriate behavior by immediately notifying event management staff. Together, we can provide a safe and respectful environment for all.



Head Coach Eric Viuhkola
Assistant Coaches Robbie Long, Ryan Svenson, Terry Pritchard, Keary Lee



OSAA / OnPoint Community Credit Union
2020 6A BASKETBALL STATE CHAMPIONSHIPS

March 11-14, 2020
 University of Portland, Chiles Center
 5000 N Willamette Blvd, Portland, OR 97203

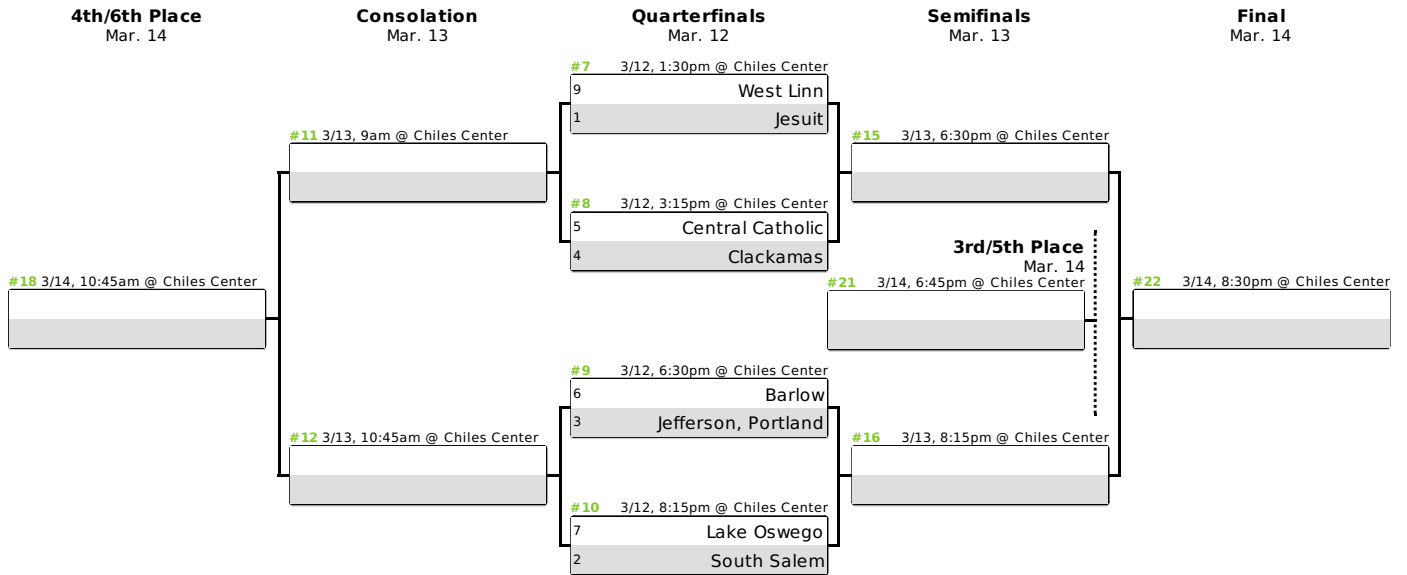


CHAMPIONSHIP SCHEDULE

| | | | |
|----------------------------|---------|---------|-------------------------|
| Wednesday, March 11 | | | |
| | | 11am | Girls Coaches Meeting |
| | | 11:30am | Officials Meeting |
| Session 1 | Game 1 | 1:30pm | Girls Quarterfinal |
| | Game 2 | 3:15pm | Girls Quarterfinal |
| Session 2 | Game 3 | 6:30pm | Girls Quarterfinal |
| | Game 4 | 8:15pm | Girls Quarterfinal |
| Thursday, March 12 | | | |
| Session 3 | Game 5 | 9am | Girls Consolation |
| | Game 6 | 10:45am | Girls Consolation |
| | | 11am | Boys Coaches Meeting |
| Session 4 | Game 7 | 1:30pm | Boys Quarterfinal |
| | Game 8 | 3:15pm | Boys Quarterfinal |
| Session 5 | Game 9 | 6:30pm | Boys Quarterfinal |
| | Game 10 | 8:15pm | Boys Quarterfinal |
| Friday, March 13 | | | |
| Session 6 | Game 11 | 9am | Boys Consolation |
| | Game 12 | 10:45am | Boys Consolation |
| Session 7 | Game 13 | 1:30pm | Girls Semifinal |
| | Game 14 | 3:15pm | Girls Semifinal |
| Session 8 | Game 15 | 6:30pm | Boys Semifinal |
| | Game 16 | 8:15pm | Boys Semifinal |
| Saturday, March 14 | | | |
| Session 9 | Game 17 | 9am | Girls Consolation Final |
| | Game 18 | 10:45am | Boys Consolation Final |
| Session 10 | Game 19 | 1:30pm | Girls Third Place |
| | Game 20 | 3:15pm | Girls Championship |
| Session 11 | Game 21 | 6:45pm | Boys Third Place |
| | Game 22 | 8:30pm | Boys Championship |

2020 OSAA / OnPoint Community Credit Union 6A Boys Basketball State Championship

March 12-14, University of Portland, Chiles Center



The team with the better Adjusted Playoff Ranking (APR) shall be the designated home team (bottom team in the matchup).

**OSAA REGULAR DISTRICTS
2019-20
(includes Adjusted 2018-19 ADM)**

| 6A | (53) | 5A | (32) | 4A | (34) |
|--|-------------|---|-------------|--|-------------|
| 1260+ | | 1259-665 | | 664-350 | |
| 6A-1 - Portland Interscholastic (9) | | 5A-1 - Northwest Oregon Conference (8) | | 4A-1 - Cowapa League (5) | |
| Benson Techmen* | 876 | Hillsboro Spartans | 1116 | Astoria Fishermen | 531 |
| Cleveland Warriors | 1488 | La Salle Prep Falcons | 716 | Banks Braves | 356 |
| Franklin Lightning | 1504 | Milwaukie / Arts Academy Mustangs | 1051 | Seaside Seagulls | 387 |
| Grant Generals | 1440 | Parkrose Broncos | 778 | Tillamook Cheesemakers | 559 |
| Jefferson Democrats* | 562 | Putnam Kingsmen | 1027 | Valley Catholic Valiants | 385 |
| Lincoln Cardinals | 1639 | Scappoose Indians | 690 | 4A-2 - Tri-Valley Conference (6) | |
| Madison Senators* | 965 | St. Helens Lions | 788 | Corbett Cardinals | 387 |
| Roosevelt Roughriders* | 719 | Wilsonville Wildcats | 1128 | Estacada Rangers | 454 |
| Wilson Trojans | 1408 | 5A-2 - Midwestern League (9) | | Gladstone Gladiators | 589 |
| 6A-2 - Metro League (7) | | Ashland Grizzlies | 909 | Madras White Buffaloes | 546 |
| Aloha Warriors | 1628 | Churchill Lancers | 943 | Molalla Indians | 643 |
| Beaverton Beavers | 1476 | Crater Comets | 1168 | North Marion Huskies | 537 |
| Jesuit Crusaders | 1260 | Eagle Point Eagles | 920 | 4A-3 - Oregon West Conference (7) | |
| Mountainside Mavericks* | 850 | North Bend Bulldogs | 692 | Cascade Cougars | 631 |
| Southridge Skyhawks | 1376 | North Eugene Highlanders | 779 | Newport Cubs | 542 |
| Sunset Apollos | 2106 | Springfield Millers | 1060 | Philomath Warriors | 450 |
| Westview Wildcats | 2419 | Thurston Colts | 1142 | Sisters Outlaws | 404 |
| 6A-3 - Pacific Conference (7) | | Willamette Wolverines | 1281 | Stayton Eagles | 599 |
| Century Jaguars | 1390 | 5A-3 - Mid-Willamette Conference (9) | | Sweet Home Huskies | 580 |
| Forest Grove Vikings | 1605 | Central Panthers | 839 | Woodburn Bulldogs** | 1118 |
| Glencoe Crimson Tide | 1375 | Corvallis Spartans | 1110 | 4A-4 - Sky Em League (6) | |
| Liberty Falcons | 1373 | Crescent Valley Raiders | 901 | Cottage Grove Lions | 616 |
| McMinnville Grizzlies | 1904 | Dallas Dragons | 792 | Elmira Falcons | 355 |
| Newberg Tigers | 1508 | Lebanon Warriors | 1102 | Junction City Tigers | 463 |
| Sherwood Bowmen | 1637 | North Salem Vikings** | 1349 | Marist Catholic Spartans | 493 |
| 6A-4 - Mt. Hood Conference (8) | | Silverton Foxes | 1166 | Marshfield Pirates | 646 |
| Barlow Bruins | 1464 | South Albany Red Hawks | 1195 | Siuslaw Vikings | 363 |
| Centennial Eagles | 1425 | West Albany Bulldogs | 1224 | 4A-5 - Skyline Conference (6) | |
| Central Catholic Rams* | 800 | 5A-4 - Intermountain Conference (6) | | Henley Hornets | 588 |
| Clackamas Cavaliers | 2355 | Crook County Cowboys | 672 | Hidden Valley Mustangs | 475 |
| David Douglas Scots | 2500 | Hood River Valley Eagles | 1136 | Klamath Union Pelicans | 528 |
| Gresham Gophers | 1267 | Pendleton Buckaroos | 707 | Mazama Vikings | 583 |
| Reynolds Raiders | 2227 | Redmond Panthers | 883 | North Valley Knights | 439 |
| Sandy Pioneers | 1296 | Ridgeview Ravens | 883 | Phoenix Pirates | 563 |
| 6A-5 - Three Rivers League (8) | | The Dalles Riverhawks | 688 | 4A-6 - Greater Oregon League (4) | |
| Canby Cougars | 1270 | 6A-6 - Mountain Valley Conference (8) | | Baker Bulldogs | 408 |
| Lake Oswego Lakers | 1256 | Bend Lava Bears | 1610 | La Grande Tigers | 608 |
| Lakeridge Pacers* | 1085 | McKay Scots | 1842 | McLoughlin Pioneers | 429 |
| Oregon City Pioneers | 1834 | McNary Celtics | 1727 | Ontario Tigers | 524 |
| St. Mary's Academy Blues | 1414 | Mountain View Cougars | 1293 | | |
| Tigard Tigers | 1785 | South Salem Saxons | 1662 | | |
| Tualatin Timberwolves | 1837 | Sprague Olympians | 1564 | | |
| West Linn Lions | 1805 | Summit Storm | 1493 | | |
| 6A-7 - Southwest Conference (6) | | West Salem Titans | 1594 | | |
| Grants Pass Cavemen | 1516 | 6A-7 - Southwest Conference (6) | | | |
| North Medford Black Tornado | 1420 | Grants Pass Cavemen | 1516 | | |
| Roseburg Indians | 1374 | North Medford Black Tornado | 1420 | | |
| Sheldon Irish | 1344 | Roseburg Indians | 1374 | | |
| South Eugene Axe | 1346 | Sheldon Irish | 1344 | | |
| South Medford Panthers | 1421 | South Eugene Axe | 1346 | | |
| | | South Medford Panthers | 1421 | | |

| KEY | |
|--|-----|
| Denotes approved play up request | * |
| Denotes approved petition to play down | ** |
| Denotes geographical exception | *** |

OnPoint Savers

The high-yield, big impact savings account for members 17 and younger.



Together, we'll help them save.

Your initial deposit of

\$25

(minimum opening deposit)

+

OnPoint's deposit of

\$55

(Includes \$5 required minimum balance.
New members only.)

+

5.00%

APY*

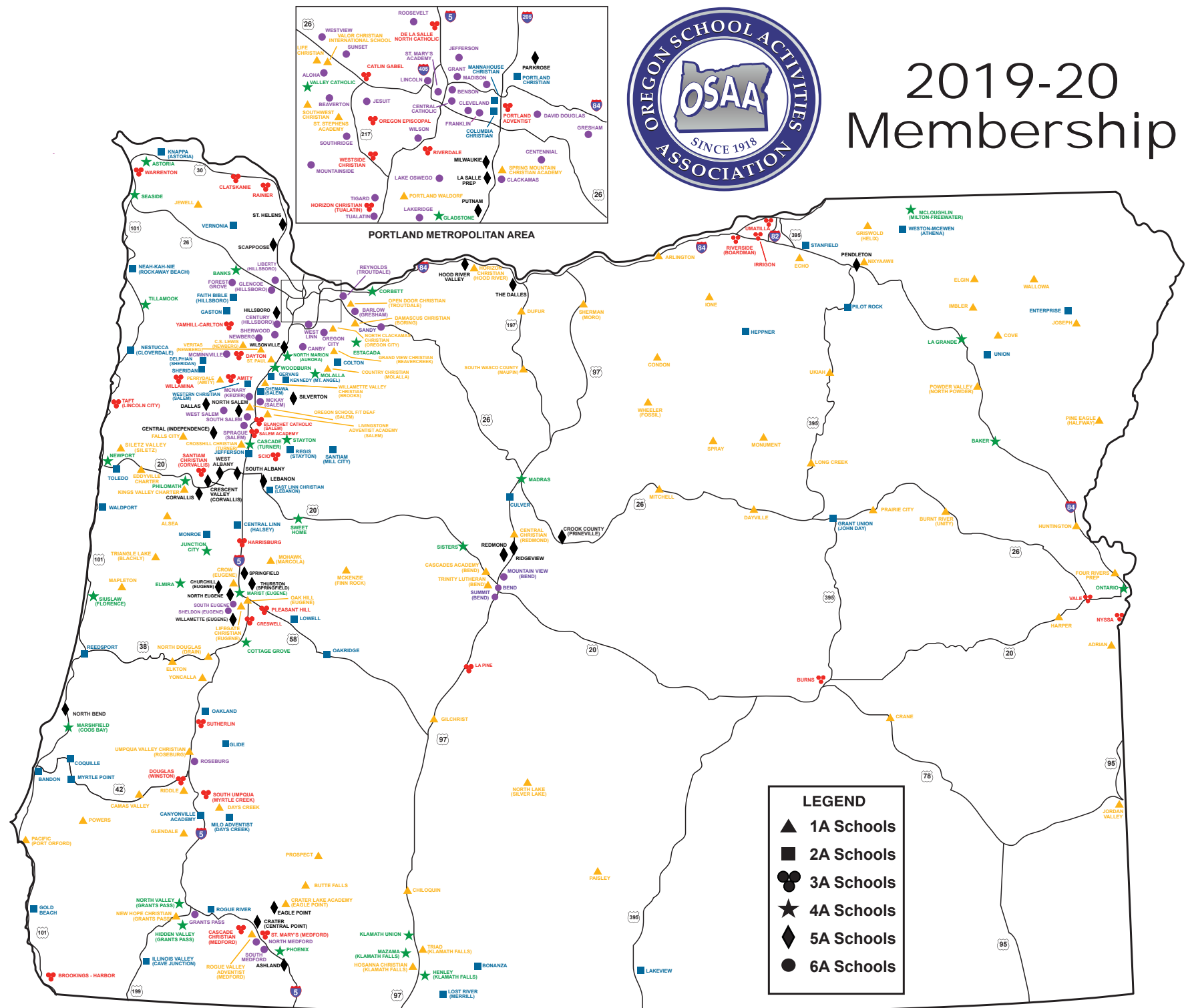
on their first \$500

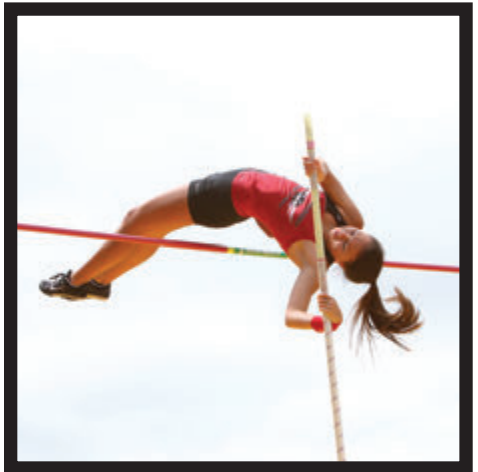
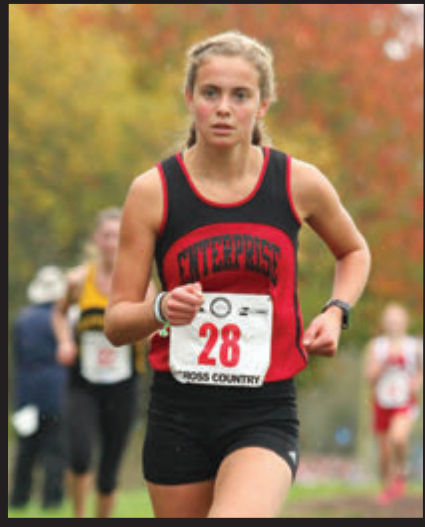
Join in. Visit onpointcu.com today!

*APY=Annual Percentage Yield. OnPoint Savers Account rate of 5.00% APY is accurate as of January 1, 2020 and subject to change. Stated APY is for balances up to \$500; balances of \$500.01 and higher earn posted Regular Savings Account rate. Account must be established for members age 17 or younger by parent or guardian with a minimum \$25 deposit. Parent or legal guardian must be on the membership and present to open the OnPoint Savers Account. When primary member attains the age of 18, accounts will be converted to Regular Savings Account, earning that account's published rate at that time. Fiduciary memberships, including UTTMA and Minor Settlement Accounts are not eligible for OnPoint Savers. One OnPoint Savers Account per member/TIN. One \$55 bonus per tax ID for new members only. Cannot be combined with Refer a Friend bonus or other promotional offers. The full account balance APY is calculated by combining the 5.00% APY earnings on the first \$500 with the standard APY on the remaining balance above \$500. Federally insured by NCUA.



2019-20 Membership





The OSAA Foundation Congratulates all OSAA Participants



To help ensure the Future of these Student Athletes and their Activities,
contact the OSAA Foundation to see how you can help today. www.osaafoundation.org

**OSAA REGULAR DISTRICTS
2019-20
(includes Adjusted 2018-19 ADM)**

| 3A 349-206 | (35) | 2A 205-90 | (48) | 1A 89- | (85) | 1A (cont.) 89- | |
|--|------------|---|------------|--------------------------------------|-------------|---------------------------------------|-------------|
| 3A-1 - Lewis & Clark League | (7) | 2A-1 - Northwest League | (9) | 1A-1 - The Valley 10 League | (11) | 1A-5 - Mountain Valley League | (11) |
| Catlin Gabel Eagles | 319 | Columbia Christian Knights | 100 | Country Christian Cougars | 56 | Cascades Academy Steelhead | 37 |
| De La Salle North Catholic Knights | 261 | Faith Bible Falcons | 178 | Damascus Christian Eagles | 64 | Central Christian Tigers | 69 |
| Horizon Christian Hawks (TUAL)* | 135 | Gaston Greyhounds | 179 | Grand View Christian Eagles | 78 | Chiloquin Panthers | 72 |
| Oregon Episcopal Aardvarks | 313 | Knappa Loggers | 117 | Life Christian Lions | 36 | Gilchrist Grizzlies | 43 |
| Portland Adventist Cougars | 252 | Mannhouse Christian Academy Lions | 129 | North Clackamas Christian Saints | 62 | Hosanna Christian Lions | 54 |
| Riverdale Mavericks | 266 | Neah-Kah-Nie Pirates | 190 | Open Door Christian Huskies | 48 | North Lake Cowboys | 66 |
| Westside Christian Eagles | 192 | Nestucca Bobcats | 130 | Portland Waldorf Wolfpack | 54 | Paisley Broncos | 31 |
| | | Portland Christian Royals | 167 | Southwest Christian Wildcats | 43 | Prospect Cougars | 45 |
| | | Vernonia Loggers | 164 | St. Stephens Academy | 49 | Rogue Valley Adventist Red Tail Hawks | 38 |
| 3A-2 - PacWest Conference | (6) | 2A-2 - Tri-River Conference | (9) | Trinity Academy Thunder | 54 | Triad Timber Wolves | 56 |
| Amity Warriors | 246 | Chemawa Braves** | 246 | Valor Christian Knights | 43 | Trinity Lutheran Saints | 59 |
| Blanchet Catholic Cavaliers | 201 | Colton Vikings | 183 | 1A-2 - Casco League | (10) | 1A-6 - Big Sky League | (11) |
| Dayton Pirates | 272 | Culver Bulldogs | 172 | C.S. Lewis Watchmen | 36 | Arlington Honkers | 35 |
| Salem Academy Crusaders | 166 | Delphian School Dragons | 136 | Crosshill Christian Eagles | 89 | Condon Blue Devils | 35 |
| Scio Loggers | 231 | Gervais Cougars** | 242 | Falls City Mountaineers | 62 | Dufur Rangers | 82 |
| Yamhill-Carlton Tigers | 260 | Kennedy Trojans | 162 | Jewell Bluejays | 43 | Echo Cougars | 75 |
| 3A-3 - Coastal Range League | (5) | Santiam Wolverines | 140 | Livingstone Adventist Academy Lions | 60 | Horizon Christian Hawks (HR) | 51 |
| Clatskanie Tigers | 211 | Sheridan Spartans | 196 | Oregon School f/t Deaf Panthers | 39 | Ione Cardinals | 54 |
| Rainier Columbians | 248 | Western Christian Pioneers | 94 | Perrydale Pirates | 85 | Mitchell Loggers | 24 |
| Taft Tigers | 343 | 2A-3 - Central Valley Conference | (8) | St. Paul Buckaroos | 81 | Sherman Huskies | 67 |
| Warrenton Warriors | 243 | Central Linn Cobras | 173 | Veritas School Vanguard | 48 | South Wasco County Redsides | 62 |
| Willamina Bulldogs | 228 | East Linn Christian Eagles | 138 | Willamette Valley Christian Warriors | 60 | Spray Eagles | 19 |
| | | Jefferson Lions** | 226 | 1A-3 - Mountain West League | (10) | Wheeler Falcons | 13 |
| 3A-4 - Mountain Valley Conference | (5) | Lowell Devils | 108 | Aelsea Wolverines | 50 | 1A-7 - Old Oregon League | (9) |
| Creswell Bulldogs | 312 | Monroe Dragons | 122 | Crow Cougars | 74 | Cove Leopards | 80 |
| Harrisburg Eagles | 246 | Oakland Oakers | 178 | Eddyville Charter Eagles | 41 | Elgin Huskies | 91 |
| La Pine Hawks | 322 | Oakridge Warriors | 122 | Kings Valley Charter Eagles | 44 | Griswold Grizzlies | 46 |
| Pleasant Hill Billies | 304 | Regis Rams | 90 | Mapleton Sailors | 39 | Imbler Panthers | 80 |
| Santiam Christian Eagles | 218 | 2A-4 - Sunset Conference | (7) | McKenzie Eagles | 54 | Joseph Eagles | 53 |
| 3A-5 - Far West League | (6) | Bandon Tigers | 184 | Mohawk Mustangs | 89 | Nixyaawii Eagles | 64 |
| Brookings-Harbor Bruins*** | 427 | Coquille Red Devils | 188 | Oak Hill School Falcons | 59 | Pine Eagle Spartans | 49 |
| Cascade Christian Challengers | 214 | Gold Beach Panthers | 143 | Siletz Valley Warriors | 62 | Powder Valley Badgers | 75 |
| Douglas Trojans | 337 | Myrtle Point Bobcats | 125 | Triangle Lake Lakers | 54 | Wallowa Cougars | 54 |
| South Umpqua Lancers | 329 | Reedsport Brave | 191 | 1A-4 - Skyline League | (11) | 1A-8 - High Desert League | (12) |
| St. Mary's Crusaders | 328 | Toledo Boomers | 149 | Camas Valley Hornets | 62 | Adrian Antelopes | 87 |
| Sutherlin Bulldogs | 309 | Waldport Irish | 143 | Days Creek Wolves | 69 | Burnt River Bulls | 24 |
| 3A-6 - Eastern Oregon League | (6) | 2A-5 - Southern Cascade League | (8) | Elkton Elks | 76 | Crane Mustangs | 47 |
| Burns Hilanders | 228 | Bonanza Antlers | 110 | Glendale Pirates | 72 | Dayville Tigers | 11 |
| Irrigon Knights | 206 | Butte Falls/Crater Lake Charter | 176 | New Hope Christian Warriors | 54 | Four Rivers Charter Falcons | 42 |
| Nyssa Bulldogs | 255 | Canyonville Academy Pilots | 70 | North Douglas Warriors | 70 | Harper Hornets | 32 |
| Riverside Pirates | 219 | Glide Wildcats | 191 | Pacific Pirates | 52 | Huntington Locomotives | 26 |
| Umatilla Vikings | 330 | Illinois Valley Cougars** | 249 | Powers Cruisers | 30 | Jordan Valley Mustangs | 26 |
| Vale Vikings | 246 | Lakeview Honkers | 212 | Riddle Irish | 84 | Long Creek Mountaineers | 15 |
| | | Lost River Raiders | 111 | Umpqua Valley Christian Monarchs | 67 | Monument Tigers | 13 |
| | | Rogue River Chieftains** | 222 | Yoncalla Eagles | 85 | Prairie City Panthers | 43 |
| | | 2A-6 - Blue Mountain Conference | (7) | | | Ukiah Cougars | 10 |
| | | Enterprise Outlaws | 126 | | | | |
| | | Grant Union Prospectors | 166 | | | | |
| | | Heppner Mustangs | 99 | | | | |
| | | Pilot Rock Rockets | 96 | | | | |
| | | Stanfield Tigers | 120 | | | | |
| | | Union Bobcats | 108 | | | | |
| | | Weston-McEwen Tiger Scots | 149 | | | | |

School with no Regular District Affiliation
Milo Adventist Mustangs 100



Oregon School Activities Association
25200 SW Parkway Avenue, Suite 1
Wilsonville, OR 97070
503.682.6722 fax: 503.682.0960 <http://www.osaa.org>

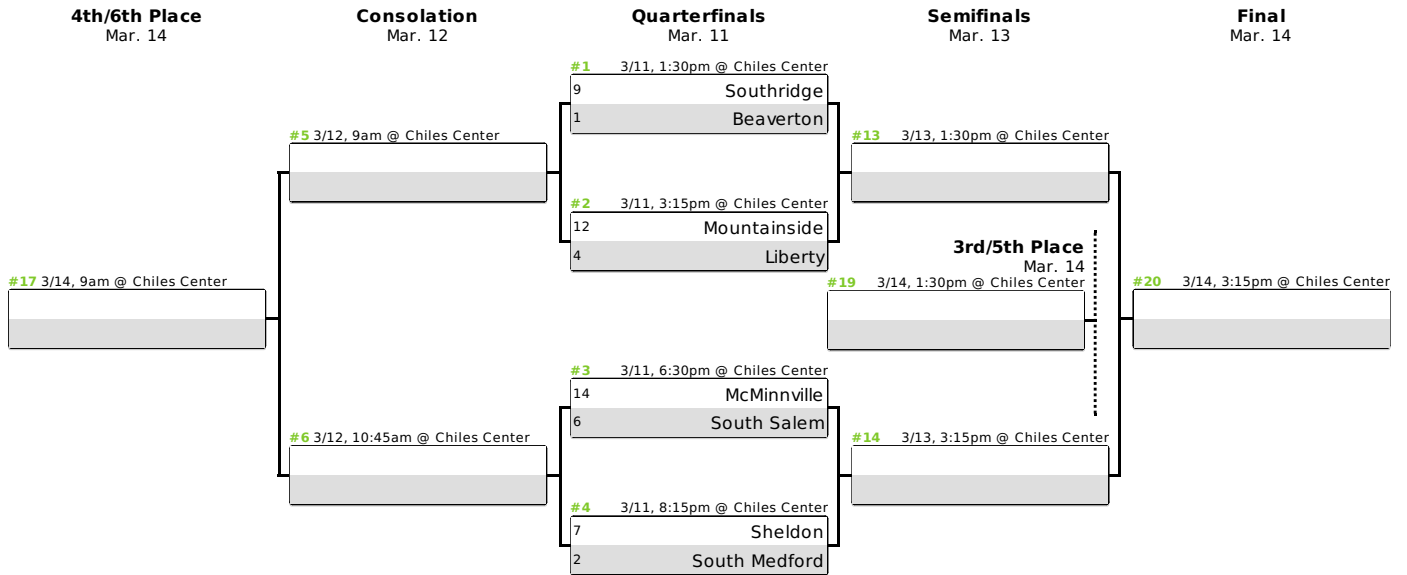


6A State Championship Officials

| Officials Name | Association |
|-------------------------|--------------------|
| Ryan Douglass | Central Oregon |
| Chuck Caylor | Douglas County |
| Joseph Jones | Lane County |
| Trien Doan | Portland |
| Ken Donald | Portland |
| Nick Fenk | Portland |
| Na'eem Hall | Portland |
| Stetson James | Portland |
| Jacob Lear | Portland |
| Geoff McCoy | Portland |
| Tom O'Donnell | Portland |
| Cam Rust | Portland |
| Josh Spirlin | Portland |
| Randy Swor | Portland |
| Joel Schuldheisz | Portland |
| Blake Zoglman | Portland |
| Greg Taylor | Salem |
| Fred Martin | Salem |

2020 OSAA / OnPoint Community Credit Union 6A Girls Basketball State Championship

March 11-14, University of Portland, Chiles Center



The team with the better Adjusted Playoff Ranking (APR) shall be the designated home team (bottom team in the matchup).

Beaverton Beavers



VARSITY ROSTER

| No. | Name | Pos. | Yr. | Ht. |
|-----|-----------------------|------|-----|------|
| 1 | Madison Naro | G | 9 | 5-7 |
| 2 | Mackenzie Naro | G | 11 | 5-7 |
| 3 | Zoe Borter | G | 9 | 5-11 |
| 4 | Emily Rice | G | 10 | 5-8 |
| 10 | Ella Baker | G | 11 | 5-10 |
| 11 | Jordyn Reverman | G | 12 | 5-9 |
| 12 | Mary Kay Naro | G | 12 | 5-11 |
| 20 | Laura Erikstrup | C | 12 | 6-2 |
| 21 | Yasmine Torres | G | 12 | 5-5 |
| 22 | Isabelle Potts | F | 12 | 6-1 |
| 23 | Madeline Remensperger | C | 11 | 6-1 |
| 24 | Alexa Borter | G | 11 | 6-0 |
| 25 | Lainey Spear | F | 9 | 6-0 |
| 32 | Sydney Erikstrup | G | 12 | 6-1 |

SCHEDULE (22-4)

| Date | Opponent | Result |
|-------|------------------------------------|---------|
| 12/6 | @ Central Valley (WA) {17-2} | W 62-54 |
| 12/7 | @ University (WA) {10-9} | W 70-47 |
| 12/18 | @ Centennial (NV) {18-6} | L 39-41 |
| 12/19 | @ Miami Country Day (FL) {16-8} | W 47-40 |
| 12/20 | @ Centennial (Corona) (CA) {23-4} | L 54-61 |
| 12/21 | @ Archbishop Wood (PA) {15-6} | L 45-59 |
| 12/27 | vs. South Salem | W 54-32 |
| 12/28 | vs. Cashmere (WA) {19-0} | L 46-56 |
| 12/29 | @ Mountainside | W 53-43 |
| 1/4 | vs. Central Catholic | W 65-27 |
| 1/10 | vs. St. Mary's Academy | W 50-40 |
| 1/14 | @ Mountainside | W 55-49 |
| 1/17 | vs. Sunset | W 55-18 |
| 1/20 | vs. Grant | W 48-34 |
| 1/21 | @ Aloha | W 84-19 |
| 1/29 | vs. Jesuit | W 62-39 |
| 1/31 | @ Westview | W 55-25 |
| 2/4 | vs. Southridge | W 55-44 |
| 2/7 | vs. Mountainside | W 48-32 |
| 2/11 | @ Sunset | W 86-35 |
| 2/14 | vs. Aloha | W 92-24 |
| 2/21 | @ Jesuit | W 38-34 |
| 2/26 | vs. Westview | W 64-33 |
| 2/28 | @ Southridge | W 57-31 |
| 3/3 | vs. Glencoe | W 80-26 |
| 3/6 | vs. St. Mary's Academy | W 56-36 |
| 3/11 | vs. Southridge | |

League 6A-2 Metro League
Location Beaverton
Mascot Beavers
Colors Beaver Orange, Black

Head Coach Kathy Naro
Assistant Coaches Lindsay Estep Watson, John Naro

Superintendent Don Grotting
Principal Anne Erwin
Athletic Director Mikel Blok

Athletic Trainer Ashlee McKay



The OSAA requests that you model good sportsmanship by refraining from derogatory cheers, chants, or behavior toward students, coaches, officials, or other spectators. Speak out if you see inappropriate behavior by immediately notifying event management staff. Together, we can provide a safe and respectful environment for all.

Liberty Falcons



VARSITY ROSTER

| No. | Name | Pos. | Yr. | Ht. |
|-----|----------------------|------|-----|------|
| 0 | Taylin Smith | G | 11 | 5-6 |
| 4 | Talia Kahakai -Wyatt | G | 12 | 5-4 |
| 10 | Livia Knapp | G | 11 | 5-6 |
| 11 | Savy Castillo | G | 12 | 5-2 |
| 12 | Breeze Bartle | P | 12 | 6-0 |
| 20 | Alexa Smith | G/P | 12 | 5-11 |
| 23 | Bella Hamel | G | 12 | 5-11 |
| 24 | Clara Robbins | P | 12 | 6-0 |
| 32 | Alyssa Chronister | G/P | 12 | 5-11 |

SCHEDULE (23-3)

| Date | Opponent | Result |
|-------|-------------------------------------|-----------------|
| 12/6 | @ West Salem | W 62-53 |
| 12/11 | @ Central Catholic | W 68-47 |
| 12/13 | vs. Roosevelt | W 100-18 |
| 12/20 | @ Tigard | W 51-29 |
| 12/27 | vs. Cashmere (WA) {19-0} | L 46-60 |
| 12/28 | vs. South Salem | L 49-70 |
| 12/29 | @ Grant | W 74-56 |
| 1/2 | vs. Milwaukie / Milwaukie Acad. o.. | W 65-39 |
| 1/3 | @ Argyle Secondary (BC) {28-10} | W 80-37 |
| 1/4 | @ Wilsonville | L 45-63 |
| 1/10 | vs. Westview | W 64-32 |
| 1/15 | vs. Sherwood | W 47-39 |
| 1/17 | vs. Glencoe | W 65-44 |
| 1/20 | @ Rainier Beach (WA) {9-10} | W 60-38 |
| 1/24 | @ Century | W 63-35 |
| 1/28 | vs. McMinnville | W 65-39 |
| 1/31 | @ Forest Grove | W 67-35 |
| 2/4 | @ Newberg | W 72-42 |
| 2/7 | vs. Century | W 98-43 |
| 2/14 | @ Glencoe | W 66-32 |
| 2/18 | @ Sherwood | W 51-46 |
| 2/21 | vs. Newberg | W 78-35 |
| 2/25 | @ McMinnville | W 61-47 |
| 2/27 | vs. Forest Grove | W 69-26 |
| 3/3 | vs. Westview | W 68-42 |
| 3/6 | vs. Canby | W 52-42 |
| 3/11 | vs. Mountainside | |

League 6A-3 Pacific Conference
Location Hillsboro
Mascot Falcons
Colors Navy, Columbia Blue, Vegas Gold

Head Coach Melanie Wagoner
Assistant Coaches Tatiana Misa, Mike McNeal

Superintendent Mike Scott
Principal Greg Timmons
Athletic Director Alan Foster

Athletic Trainer Angie Fuge-Bond



The OSAA requests that you model good sportsmanship by refraining from derogatory cheers, chants, or behavior toward students, coaches, officials, or other spectators. Speak out if you see inappropriate behavior by immediately notifying event management staff. Together, we can provide a safe and respectful environment for all.



McMinnville Grizzlies



VARSITY ROSTER

| No. | Name | Pos. | Yr. | Ht. |
|-----|-------------------|------|-----|------|
| 5 | Emily Boggs | G | 12 | 5-7 |
| 10 | Hannah Galan | G | 12 | 5-6 |
| 11 | Emily Jensen | G | 10 | 5-7 |
| 12 | Lucy Angevine | G | 10 | 5-5 |
| 13 | Gretchen Sorenson | F | 12 | 5-11 |
| 14 | Jadie Elkins | F | 11 | 5-10 |
| 15 | Kylee Arzner | F | 11 | 5-10 |
| 20 | Laney Hyder | G | 10 | 5-8 |
| 21 | Katelyn Frank | G | 11 | 5-6 |
| 22 | Grace Bliven | G | 12 | 5-9 |
| 23 | Michaela Manson | F | 12 | 5-8 |
| 24 | Janelle Phelps | F | 10 | 5-10 |
| 33 | Libby Hardee | G | 9 | 5-4 |

SCHEDULE (18-8)

| Date | Opponent | Result |
|-------|-----------------------|---------|
| 12/6 | vs. Hillsboro | W 46-44 |
| 12/10 | vs. Franklin | W 63-33 |
| 12/13 | @ North Medford | W 66-41 |
| 12/17 | vs. Sunset | W 54-33 |
| 12/20 | @ South Salem | L 45-64 |
| 12/27 | vs. McKay | W 65-36 |
| 12/28 | vs. Oregon City | L 37-52 |
| 12/29 | @ Clackamas | L 40-53 |
| 1/3 | vs. Lincoln | W 44-36 |
| 1/7 | @ Barlow | W 62-49 |
| 1/10 | vs. Tualatin | L 39-54 |
| 1/13 | vs. Camas (WA) {11-8} | L 45-60 |
| 1/17 | vs. Century | W 55-37 |
| 1/21 | @ Sherwood | W 45-36 |
| 1/24 | @ Forest Grove | L 31-32 |
| 1/28 | @ Liberty | L 39-65 |
| 1/31 | vs. Newberg | W 57-38 |
| 2/4 | @ Glencoe | W 53-48 |
| 2/7 | vs. Forest Grove | W 53-43 |
| 2/12 | vs. Sherwood | W 44-30 |
| 2/14 | @ Century | W 41-32 |
| 2/21 | vs. Glencoe | W 45-33 |
| 2/25 | vs. Liberty | L 47-61 |
| 2/28 | @ Newberg | W 40-38 |
| 3/3 | vs. Barlow | W 51-35 |
| 3/6 | @ West Linn | W 57-53 |
| 3/11 | @ South Salem | |

League 6A-3 Pacific Conference
Location McMinnville
Mascot Grizzlies
Colors Red, Black, White

Superintendent Maryalice Russell
Principal Amy Fast
Athletic Director Ryan McIrvin

Athletic Trainer Mason Brunette



The OSAA requests that you model good sportsmanship by refraining from derogatory cheers, chants, or behavior toward students, coaches, officials, or other spectators. Speak out if you see inappropriate behavior by immediately notifying event management staff. Together, we can provide a safe and respectful environment for all.



Head Coach Sean Coste
Assistant Coach Adam Howard

Mountainside Mavericks



VARSITY ROSTER

| No. | Name | Pos. | Yr. | Ht. |
|-----|-------------------|------|-----|-----|
| 1 | Ashley Goodale | G | 9 | 5-4 |
| 2 | Hailey Lines | F/G | 12 | 5-9 |
| 5 | Abby Crawshaw | G | 10 | 5-8 |
| 10 | Lauren Thompson | G | 11 | 5-8 |
| 11 | Shaylee Gonzalez | F/G | 10 | 5-8 |
| 12 | Lindsey Wilson | P/F | 10 | 6-0 |
| 20 | Aurelia Mafinejad | G | 10 | 5-7 |
| 21 | Taylor Smith | G | 10 | 5-6 |
| 22 | Ava Shandy | F | 10 | 5-7 |
| 23 | Carly Stone | G | 10 | 5-7 |
| 24 | Halle Hageman | G | 10 | 5-6 |
| 25 | Ana Ika | F | 11 | 5-9 |
| 32 | Maddie Giebels | P | 10 | 6-1 |
| 33 | Cameron Brink | F/P | 12 | 6-5 |

SCHEDULE (18-9)

| Date | Opponent | Result |
|-------|--------------------------------------|---------|
| 12/6 | vs. Clackamas | W 57-46 |
| 12/7 | vs. Sherwood | W 77-52 |
| 12/10 | @ Canby | L 44-51 |
| 12/18 | @ Chandler (AZ) {19-9} | L 45-50 |
| 12/19 | vs. Sacred Heart Cathedral (CA) {1.. | W 66-40 |
| 12/20 | vs. Thunder Basin (WY) {17-4} | W 59-44 |
| 12/21 | @ Salesian College Prep (CA) {24-... | L 45-57 |
| 12/27 | vs. Grant | W 58-48 |
| 12/28 | @ La Salle Prep | L 40-42 |
| 12/29 | vs. Beaverton | L 43-53 |
| 1/3 | vs. Summit | W 66-26 |
| 1/10 | vs. North Medford | W 64-38 |
| 1/14 | vs. Beaverton | L 49-55 |
| 1/17 | @ Jesuit | W 44-34 |
| 1/20 | @ Benson | W 70-67 |
| 1/21 | @ Westview | W 41-32 |
| 1/24 | vs. Southridge | L 44-58 |
| 1/31 | @ Sunset | W 72-25 |
| 2/4 | vs. Aloha | W 94-27 |
| 2/7 | @ Beaverton | L 32-48 |
| 2/11 | vs. Jesuit | W 68-46 |
| 2/14 | vs. Westview | W 45-37 |
| 2/18 | @ Southridge | L 47-65 |
| 2/26 | vs. Sunset | W 59-31 |
| 2/28 | @ Aloha | W 56-25 |
| 3/3 | vs. South Eugene | W 54-29 |
| 3/6 | @ Oregon City | W 41-39 |
| 3/11 | @ Liberty | |

League 6A-2 Metro League
Location Beaverton
Mascot Mavericks
Colors Black, Silver, Columbia Blue



Head Coach Glen Lee
Assistant Chris Sizemore, Megan Almack,
Coaches Rosetta Adzasu

Superintendent Don Grotting
Principal Todd Corsetti
Athletic Director Bryan Sorenson

Athletic Trainer Christina Gray



The OSAA requests that you model good sportsmanship by refraining from derogatory cheers, chants, or behavior toward students, coaches, officials, or other spectators. Speak out if you see inappropriate behavior by immediately notifying event management staff. Together, we can provide a safe and respectful environment for all.

Sheldon Irish



VARSITY ROSTER

| No. | Name | Pos. | Yr. | Ht. |
|-----|------------------|------|-----|------|
| 2 | Harley Sowers | G | 12 | 5-7 |
| 5 | Paityn Rhode | G | 10 | 5-7 |
| 10 | Kiran Sperry | G/F | 11 | 5-9 |
| 11 | Alyssa Mirabile | G | 12 | 5-8 |
| 12 | Kailey Glenn | G | 10 | 5-6 |
| 15 | Olivia Pierzina | G | 11 | 5-6 |
| 20 | Sophie Miller | G | 10 | 5-6 |
| 21 | Carly Wheeler | F | 11 | 5-10 |
| 22 | Gabbie Harms | F | 9 | 5-10 |
| 23 | Makayla Scurlock | G/F | 12 | 5-6 |
| 24 | Emma Hawley | G | 11 | 5-7 |
| 25 | Quinn West | F | 11 | 6-0 |
| 30 | Beaux Bruegman | F | 9 | 5-10 |
| 33 | Reilly Kelty | F | 12 | 6-3 |

SCHEDULE (22-5)

| Date | Opponent | Result |
|-------|-------------------------------|---------|
| 12/6 | vs. McNary | W 66-30 |
| 12/7 | vs. Bend | W 53-41 |
| 12/10 | vs. Tigard | W 51-30 |
| 12/13 | vs. West Salem | L 48-50 |
| 12/17 | @ Hillsboro | W 72-43 |
| 12/20 | vs. Clackamas | W 54-37 |
| 12/27 | @ La Salle Prep | L 51-60 |
| 12/28 | vs. Grant | W 55-49 |
| 12/29 | @ South Salem | W 53-51 |
| 1/3 | @ Camas (WA) {12-7} | W 55-43 |
| 1/4 | @ Skyview (WA) {14-5} | W 49-45 |
| 1/7 | vs. Canby | W 49-33 |
| 1/10 | @ Churchill | L 41-54 |
| 1/14 | @ Roseburg | W 85-15 |
| 1/18 | @ Spanish Springs (NV) {19-3} | W 57-41 |
| 1/20 | @ McQueen (NV) {16-7} | W 56-34 |
| 1/24 | vs. North Medford | W 63-30 |
| 1/28 | vs. Grants Pass | W 38-25 |
| 1/31 | @ South Eugene | W 66-47 |
| 2/7 | @ South Medford | L 58-72 |
| 2/14 | vs. Roseburg | W 79-24 |
| 2/18 | @ North Medford | W 65-24 |
| 2/21 | @ Grants Pass | W 46-28 |
| 2/25 | vs. South Eugene | W 59-52 |
| 2/28 | vs. South Medford | L 60-70 |
| 3/3 | vs. Lincoln | W 58-33 |
| 3/6 | vs. West Salem | W 47-29 |
| 3/11 | @ South Medford | |

League 6A-7 Southwest Conference
Location Eugene
Mascot Irish
Colors Green, Dark Blue, Black

Superintendent Dr. Gustavo Balderas
Principal Mike Ingman
Athletic Director Heather Stein

Athletic Trainer Laura Baker



The OSAA requests that you model good sportsmanship by refraining from derogatory cheers, chants, or behavior toward students, coaches, officials, or other spectators. Speak out if you see inappropriate behavior by immediately notifying event management staff. Together, we can provide a safe and respectful environment for all.



Head Coach Brian Brancato
Assistant Coaches Clay Myers, Andy Miller, Jason Galic

South Medford Panthers



VARSITY ROSTER

| No. | Name | Pos. | Yr. | Ht. |
|-----|---------------------|------|-----|------|
| 0 | Kaili Chamberlin | F | 11 | 5-9 |
| 1 | Toni Coleman | G | 11 | 5-4 |
| 3 | Lottie Dillard | G | 10 | 5-7 |
| 5 | Emma Schmerbach | G | 11 | 5-9 |
| 10 | Bella Pedrojetti | G | 12 | 5-9 |
| 11 | Sierra Logue | F | 10 | 6-2 |
| 12 | Tanesha Coley | F | 10 | 5-9 |
| 13 | Laini Dahlin | G | 11 | 5-8 |
| 20 | Bella Stone | G | 11 | 5-4 |
| 21 | Shakia Teague-Perry | F | 11 | 5-10 |
| 24 | Tatum Schmerbach | G/F | 9 | 5-9 |
| 32 | Kendall Fealey | G/F | 9 | 5-10 |

SCHEDULE (24-3)

| Date | Opponent | Result |
|-------|--------------------------------------|---------|
| 12/6 | @ Bend | W 75-48 |
| 12/7 | vs. McNary | W 62-7 |
| 12/12 | @ Kahuku (HI) {18-5} | W 54-36 |
| 12/13 | @ St. Mary's (CA) {19-4} | L 47-62 |
| 12/14 | @ Iolani HS (HI) {21-2} | L 52-75 |
| 12/18 | vs. Crater | W 75-30 |
| 12/20 | @ Del Oro (CA) {19-7} | W 66-54 |
| 12/21 | @ Franklin (CA) {23-4} | W 67-48 |
| 12/27 | @ White County (TN) {21-8} | W 65-48 |
| 12/28 | @ West Linn | W 55-39 |
| 12/29 | vs. Wilsonville | W 59-50 |
| 1/3 | @ Silverton | L 35-44 |
| 1/4 | @ Churchill | W 62-56 |
| 1/11 | vs. Enterprise (CA) {18-10} | W 70-26 |
| 1/20 | @ St Patricks St Vincent (CA) {18-9} | W 76-50 |
| 1/22 | @ South Eugene | W 78-62 |
| 1/24 | vs. Grants Pass | W 78-33 |
| 1/28 | vs. Roseburg | W 90-25 |
| 1/30 | @ North Medford | W 68-24 |
| 2/7 | vs. Sheldon | W 72-58 |
| 2/13 | vs. South Eugene | W 63-49 |
| 2/18 | @ Grants Pass | W 68-20 |
| 2/21 | @ Roseburg | W 82-33 |
| 2/26 | vs. North Medford | W 81-19 |
| 2/28 | @ Sheldon | W 70-60 |
| 3/3 | vs. Tigard | W 61-37 |
| 3/6 | vs. Bend | W 70-34 |
| 3/11 | vs. Sheldon | |

League 6A-7 Southwest Conference
Location Medford
Mascot Panthers
Colors Dark Blue, Black, Gray

Head Coach Tom Cole
Assistant Coaches Hannah Warren, Yaremi Mejia, Elizabeth Gibson

Superintendent Dr. Bret Champion
Principal Donnie Frazier
Athletic Director Tim Rupp

Athletic Trainer Helena Russell



The OSAA requests that you model good sportsmanship by refraining from derogatory cheers, chants, or behavior toward students, coaches, officials, or other spectators. Speak out if you see inappropriate behavior by immediately notifying event management staff. Together, we can provide a safe and respectful environment for all.

South Salem Saxons



VARSITY ROSTER

| No. | Name | Pos. | Yr. | Ht. |
|-----|------------------------|------|-----|------|
| 0 | Ellyson Haytas | W | 12 | 5-7 |
| 2 | Hilary James | G | 11 | 5-5 |
| 3 | Malyah Bolden | G | 11 | 5-6 |
| 4 | Katelyn Williams | W | 11 | 5-7 |
| 5 | Tiani Gebauer-Tinitali | G | 11 | 5-4 |
| 10 | Delaney Keith | G | 10 | 5-9 |
| 11 | Zoe Fry | P | 11 | 6-2 |
| 13 | Lexie Dalton | W | 10 | 5-7 |
| 14 | Halley Barram | G | 10 | 5-8 |
| 15 | Jacquie Wadsworth | P | 11 | 5-10 |
| 21 | Quincy Winder | W | 12 | 5-5 |
| 23 | Victoria Stafford | P | 12 | 6-0 |
| 30 | Gretchen Olsen | W | 12 | 5-10 |

SCHEDULE (22-4)

| Date | Opponent | Result |
|-------|-------------------|---------|
| 12/6 | @ South Eugene | L 42-52 |
| 12/10 | vs. Glencoe | W 58-30 |
| 12/13 | @ Canby | L 45-49 |
| 12/17 | @ Barlow | W 61-44 |
| 12/20 | vs. McMinnville | W 64-45 |
| 12/27 | @ Beaverton | L 32-54 |
| 12/28 | @ Liberty | W 70-49 |
| 12/29 | vs. Sheldon | L 51-53 |
| 1/3 | vs. Century | W 60-31 |
| 1/10 | @ Sherwood | W 41-29 |
| 1/17 | vs. Sprague | W 87-18 |
| 1/21 | vs. Mountain View | W 66-38 |
| 1/23 | @ McKay | W 67-37 |
| 1/25 | vs. Summit | W 78-36 |
| 1/30 | @ Bend | W 48-38 |
| 2/1 | vs. McNary | W 78-37 |
| 2/4 | @ West Salem | W 54-51 |
| 2/7 | @ Mountain View | W 50-23 |
| 2/11 | @ Sprague | W 77-20 |
| 2/14 | @ Summit | W 71-48 |
| 2/18 | vs. McKay | W 79-50 |
| 2/21 | vs. West Salem | W 55-40 |
| 2/26 | vs. Bend | W 55-29 |
| 2/28 | @ McNary | W 56-29 |
| 3/3 | vs. David Douglas | W 83-55 |
| 3/6 | vs. Benson | W 65-57 |
| 3/11 | vs. McMinnville | |

League 6A-6 Mountain Valley Conference
Location Salem
Mascot Saxons
Colors Columbia Blue, Scarlet

Superintendent Christy Perry
Principal Lara Tiffin
Athletic Director Brian Armstrong
Athletic Trainer Abby Hendricks

Head Coach Adrian Lewis
Assistant Coaches Dan Hoffman, Jason Herber, Clint Vallie



The OSAA requests that you model good sportsmanship by refraining from derogatory cheers, chants, or behavior toward students, coaches, officials, or other spectators. Speak out if you see inappropriate behavior by immediately notifying event management staff. Together, we can provide a safe and respectful environment for all.

Southridge Skyhawks



VARSITY ROSTER

| No. | Name | Pos. | Yr. | Ht. |
|-----|----------------------|------|-----|-----|
| 5 | Rachel Powers | G | 9 | 5-6 |
| 10 | McKelle Meek | G | 12 | 5-7 |
| 11 | Allyson Morley | G | 10 | 5-6 |
| 12 | Maya Hoff | G | 11 | 6-1 |
| 14 | Kyla Vinson | W | 12 | 5-9 |
| 15 | Jewel Miner | G | 11 | 5-7 |
| 22 | Katelyn Stellingwerf | G | 9 | 5-6 |
| 23 | Tait Quinlan | G | 10 | 6-2 |
| 24 | Kilyn Dawkins | W | 11 | 6-1 |
| 25 | Kaylen Blair | G | 12 | 5-7 |
| 30 | Emoney Perry-Reid | W | 12 | 5-9 |

SCHEDULE (19-6)

| Date | Opponent | Result |
|-------|-------------------------------|---------|
| 12/6 | vs. Grant | W 62-54 |
| 12/10 | @ Benson | L 60-63 |
| 12/13 | @ Tigard | W 65-57 |
| 12/19 | @ Horizon CO (CO) {11-11} | W 56-32 |
| 12/20 | @ Willow Glen (CA) {15-6} | W 60-35 |
| 12/21 | @ St. Ignatius (CA) {16-9} | W 50-47 |
| 12/27 | @ West Linn | L 59-63 |
| 12/28 | vs. White Country (TN) {20-9} | L 52-54 |
| 12/29 | vs. Tigard | W 66-52 |
| 1/7 | vs. Central Catholic | W 51-50 |
| 1/10 | @ La Salle Prep | L 41-51 |
| 1/14 | @ Jesuit | W 52-32 |
| 1/17 | vs. Westview | W 51-30 |
| 1/24 | @ Mountainside | W 58-44 |
| 1/29 | vs. Sunset | W 78-30 |
| 1/31 | vs. Aloha | W 53-24 |
| 2/4 | @ Beaverton | L 44-55 |
| 2/7 | vs. Jesuit | W 61-52 |
| 2/11 | @ Westview | W 44-34 |
| 2/18 | vs. Mountainside | W 65-47 |
| 2/21 | @ Sunset | W 66-39 |
| 2/26 | @ Aloha | W 69-24 |
| 2/28 | vs. Beaverton | L 31-57 |
| 3/3 | vs. Lakeridge | W 65-47 |
| 3/6 | @ Tualatin | W 51-38 |
| 3/11 | @ Beaverton | |

League 6A-2 Metro League
Location Beaverton
Mascot Skyhawks
Colors Cardinal, Gold, Black



Head Coach Michael Bergmann
Assistant Coaches Mustapha Hoff, Tim Quinlan, Hanna Rose, Marisa Hamilton, Sarah Bucknovitz

Superintendent Don Grotting
Principal David Nieslanik
Athletic Director Trisha Shoemaker

Athletic Trainer Rebecca Blake



The OSAA requests that you model good sportsmanship by refraining from derogatory cheers, chants, or behavior toward students, coaches, officials, or other spectators. Speak out if you see inappropriate behavior by immediately notifying event management staff. Together, we can provide a safe and respectful environment for all.

6A GIRLS BASKETBALL TOURNAMENT RECORDS

(Since 2007)

TEAM

FIELD GOALS —

Att., Game — 85, Oregon City (made 33) vs. Sheldon - 2007
Att., Tour — 196, Franklin - 2010
Made, Game — 33, Oregon City (of 85) vs. Sheldon - 2007
33, Westview (of 65) vs. Clackamas - 2013
Made, Tour — 73, Oregon City (of 144) - 2011
High Pct., Game — .636, St. Mary's (28 for 44) vs. Sheldon - 2015
High Pct., Tour — .507, Oregon City (73-144) - 2011
.507, Oregon City (68-134) - 2013
3-Pt. Att., Game — 37, Franklin (made 12) vs. Tualatin - 2009
3-Pt. Att., Tour — 72, Franklin (made 13) - 2010
3-Pt. Made, Game — 13, Oregon City (of 25) vs. Tigard - 2011
3-Pt. Made, Tour — 21, Oregon City (of 44) - 2014
High 3-Pt. Pct., Game — 1.000, Tigard (1-1) vs. South Medford - 2011
High 3-Pt. Pct., Tour — .500, Oregon City (28-56) - 2011

FREE THROWS ---

Att., Game — 48, Sheldon (made 43) vs. Oregon City - 2007
Att., Tour — 85, Oregon City (made 63) - 2009
85, South Salem (made 51) - 2015
Made, Game — 43, Sheldon (of 48) vs. Oregon City - 2007
Made, Tour — 69, Sheldon (of 81) - 2007
High Pct., Game — 1.000, Oregon City (5-5) vs. Tigard - 2011
High Pct., Tour — .852, Sheldon (69-81) - 2007

POINTS —

High, Game — 93, Sheldon vs. Oregon City - 2007
High, Game (Both Teams) — 179, Sheldon vs. Oregon City (93-86, 3 OT) - 2007
High, Tour — 199, Oregon City - 2011
Low, Game — 24, Central Catholic vs. Southridge - 2008
24, Beaverton vs. Sheldon (43-24) - 2015
Low, Game (Both Teams) — 63, Southridge vs. Central Catholic (39-24) - 2008
High Margin, Game — 40, Southridge vs. St. Mary's Academy (82-42) - 2017

REBOUNDS —

High, Game — 57, Tualatin vs. Franklin - 2009
High, Tour — 126, Westview - 2013

BLOCKED SHOTS —

High, Game — 12, West Linn vs. North Medford - 2018
High, Tour — 22, Southridge - 2010

ASSISTS —

High, Game — 22, Oregon City vs. South Eugene - 2011
22, Benson vs. Southridge - 2019
High, Tour — 55, Oregon City - 2013

STEALS —

High, Game — 22, Oregon City vs. Franklin - 2009
High, Tour — 44, Oregon City - 2009

CHAMPIONSHIP GAME —

High Score — 66, Benson vs. Southridge - 2019
High Score (Both Teams) — 108, Benson vs. Southridge (66-42) - 2019
Low Score — 27, Jesuit vs. Southridge (27-50) - 2007
27, Oregon City vs. Southridge (27-45) - 2017
27, Benson vs. Southridge (27-46) - 2018
Low Score (Both Teams) — 73, Southridge vs. Benson (46-27) - 2018
High Margin — 24, Benson vs. Southridge (66-42) - 2019

INDIVIDUAL

FIELD GOALS —

Att., Game — 34, Shoni Schimmel, Franklin (made 10) vs. Central Catholic - 2010
Att., Tour — 69, Shoni Schimmel, Franklin (made 28) - 2010
Made, Game — 12, Katie Steigleman, Sheldon (of 17) vs. Oregon City - 2007
12, Jen Reese, Clackamas (of 14) vs. McNary - 2009
Made, Tour — 28, Shoni Schimmel, Franklin (of 89) - 2010
28, Jamie Nared, Westview (of 64) - 2014
High Pct., Game — .857, Jen Reese, Clackamas (12-14) vs. McNary - 2009
High Pct., Tour — .833, Jen Reese, Clackamas (20-24) - 2009
3-Pt. Att., Game — 28, Shoni Schimmel, Franklin (made 10) vs. Tualatin - 2009
3-Pt. Att., Tour — 43, Shoni Schimmel, Franklin (made 16) - 2009
3-Pt. Made, Game — 10, Shoni Schimmel, Franklin (of 28) vs. Tualatin - 2009
3-Pt. Made, Tour — 16, Shoni Schimmel, Franklin (of 43) - 2009
High 3-Pt. Pct., Game — 1.000, Meaghan White, Jesuit (3-3) vs. Southridge - 2007
1.000, Cierra Walker, Oregon City (3-3) vs. South Medford - 2014
High 3-Pt. Pct., Tour — .636, Shannen Taylor, Jesuit (7-11) - 2009
.636, Cierra Walker, Oregon City (7-11) - 2014

FREE THROWS —

Att., Game — 19, Evina Westbrook, South Salem (made 14) vs. Grant - 2017
Att., Tour — 33, Theresa Brown, Sheldon (made 28) - 2007
33, Evina Westbrook, South Salem (made 25) - 2017
Made, Game — 15, Theresa Brown, Sheldon (of 16) vs. Oregon City - 2007
15, Shoni Schimmel, Franklin (of 18) vs. Central Catholic - 2010
15, Gigi Stoll, Beaverton (of 15) vs. Jesuit - 2015
Made, Tour — 28, Theresa Brown, Sheldon (of 33) - 2007
High Pct., Game — 1.000, Gigi Stoll, Beaverton (15-15) vs. Jesuit - 2015
High Pct., Tour — 1.000, Montana Walters, Oregon City (20-20) - 2012

POINTS —

High, Game — 38, Shoni Schimmel, Franklin vs. Central Catholic - 2010
High, Tour — 87, Jaime Nared, Westview - 2014

REBOUNDS —

High, Game — 23, Juli Tago, South Medford vs. Sheldon - 2016
High, Tour — 47, Cameron Brink, Southridge - 2019

BLOCKED SHOTS —

High, Game — 9, Katy Wade, Central Catholic vs. Sunset - 2008
High, Tour — 14, Katy Wade, Central Catholic - 2007
14, Cameron Brink, Southridge - 2018

ASSISTS —

High, Game — 10, Paige Halberg, Oregon City vs. Sheldon - 2007
10, Aly Holterhoff, Oregon City vs. Tigard - 2011
High, Tour — 20, Montana Walters, Oregon City - 2013

STEALS —

High, Game — 10, Deeshrya Thomas, Clackamas vs. St. Mary's - 2013
High, Tour — 14, Deeshrya Thomas, Clackamas - 2013
14, Autumn Baumgartner, Sheldon - 2015

ALL-TIME CLASSIFICATIONS COMBINED GIRLS BASKETBALL TOURNAMENT RECORDS

(Prior to 2007, classifications were 4A, 3A, 2A, 1A)

TEAM

FIELD GOALS –

Att., Game – 87, St. Paul – 1993 (1A)
Att., Tour – 213, Elgin (made 50) – 1995 (2A)
Made, Game – 40, St. Mary's Academy (of 81) vs. Lincoln – 1985 (4A)
Made, Tour – 87, St. Paul (of 175) – 1993 (1A)
High Pct., Game - .710, Valley Catholic (22-31) vs. Junction City – 1995 (3A)
High Pct., Tour - .544, Imbler (80-147) – 1990 (2A)
3-pt. Att., Game – 37, Franklin (made 12) vs. Tualatin – 2009 (6A)
3-pt. Att., Tour – 81, East Linn Christian (made 19) – 2011 (2A)
3-pt. Made, Game – 17, La Salle Prep (of 29) vs. Marist Catholic – 2016 (5A)
3-pt. Made, Tour – 26, La Salle Prep (of 79) – 2016 (5A)
High 3-pt. Pct., Game – 1.000, Tigard (1-1) vs. South Medford – 2011 (6A)
High 3-pt. Pct., Tour - .519, Corvallis (14-27) – 2016 (5A)

FREE THROWS –

Att., Game – 57, St. Paul (made 26) vs. Adrian – 2000 (1A)
Att., Tour – 103, St. Paul (made 52) – 2000 (1A)
Made, Game – 43, Sheldon (of 48) vs. Oregon City – 2007 (6A)
Made, Tour – 70, Sheldon (of 102) – 2004 (4A)
High Pct., Game – 1.000, Sutherlin (8-8) vs. Mazama – 2016 (4A)
1.000, Joseph (8-8) vs. Craine – 2019 (1A)
High Pct., Tour – .896, Sheldon (43-48) – 2007 (6A)

POINTS –

High, Game – 96, Oregon City vs. Benson (96-62) – 1994 (4A)
High, Game (Both Teams) – 179, Sheldon vs. Oregon City (93-86, 3 OT) – 2007 (6A)
High, Tour – 199, Oregon City – 2011 (6A)

REBOUNDS –

High, Game – 77, Adrian vs. Alsea – 1996 (1A)
High, Tour – 168, Dayville – 1987 (1A)

BLOCKED SHOTS –

High, Game – 15, Springfield vs. Hermiston – 2013 (5A)
15, Western Mennonite vs. Union – 2015 (2A)
High, Tour – 26, Springfield – 2013 (5A)

ASSISTS –

High, Game – 27, Lake Oswego vs. Crater – 1987 (4A)
High, Tour – 55, Tillamook – 2005 (3A)

STEALS –

High, Game – 28, Chiloquin vs. Salem Academy – 2007 (2A)
High, Tour – 56, Harper – 1993 (1A)

INDIVIDUAL

FIELD GOALS –

Att., Game – 41, Peg Hoover, Wheeler (made 15) – 1978 (1A)
Att., Tour – 80, Leada Berkey, Amity (made 31) – 2004 (2A)
Made, Game – 19, Trisha Stevens, Philomath (of 22) vs. Marist – 1987 (3A)
Made, Tour – 37, Jenny Mowe, Powers (of 53) – 1995 (1A)
High Pct., Game – 1.000, Chris Bond, Corbett (13-13) vs. North Douglas – 1986 (2A)
High Pct., Tour - .833, Jen Reese, Clackamas (20-24) – 2009 (6A)
3-pt Att., Game – 28, Shoni Schimmel, Franklin (made 10) vs. Tualatin – 2009 (6A)
3-pt. Att., Tour – 43, Shoni Schimmel, Franklin (made 16) – 2009 (6A)
3-pt. Made, Game – 10, Shoni Schimmel, Franklin (of 28) vs. Tualatin – 2009 (6A)
3-pt. Made, Tour – 16, Shoni Schimmel, Franklin (of 43) – 2009 (6A)
3-pt. High Pct., Game - 1.000, Kristina Neet, Marist (8-8) vs. Ontario - 2005 (3A)
3-pt. High Pct., Tour - .667, Lexi Bando, Willamette (10-15) – 2013 (5A)

FREE THROWS –

Att., Game – 22, Renee Hensley, Long Creek – 1977 (1A)
22, Kerri Moos, Philomath (made 18) vs. Hood River Valley – 1985 (3A)
22, Laurie Nelson, Redmond (made 17) vs. Corvallis – 1987 (4A)
22, Elisa Niemela, North Eugene (made 17) vs. Sandy – 1993 (4A)
22, Amy Croll, Glide (made 13) vs. Henley – 2003 (3A)
22, Haley Guest, Scio (made 14) vs. St. Mary's (Medford) – 2010 (2A)
Att., Tour – 39, Kellian Holmstedt, North Bend (made 30) – 2007 (4A)
Made, Game – 18, Kerri Moos, Philomath (of 22) vs. Hood River Valley – 1985 (3A)
18, Laurie Nelson, Redmond (of 22) vs. Corvallis – 1987 (4A)
18, Madison Hull, Western Mennonite (of 20) vs. Kennedy – 2017
Made, Tour – 31, Gretchen Owens, Glendale (of 43) – 2008 (2A)
High Pct., Game – 1.000, Laura Moore, Pendleton (15 for 15) – 1989 (4A)
1.000, Gigi Stoll, Beaverton (15 for 15) – 2015 (6A)
High Pct., Tour – 1.000, Montana Walters, Oregon City (20-20) vs. St. Mary's Academy – 2012 (6A)

POINTS –

High, Game – 47, Trisha Stevens, Philomath vs. Marist – 1987 (3A)
High, Tour – 92, Aspen Slifka, Banks – 2018 (4A)

REBOUNDS –

High, Game – 30, Trisha Stevens, Philomath vs. Cascade – 1986 (3A)
High, Tour – 64, Abby Wirfs, La Pine – 1987 (2A)

BLOCKED SHOTS –

High, Game – 12, Stephanie Block, Glencoe vs. Benson – 1996 (4A)
12, Mercedes Russell, Springfield vs. Hermiston – 2013 (5A)
High, Tour – 20, Mercedes Russell, Springfield – 2013 (5A)

ASSISTS –

High, Game – 13, Rachel Schacht, North Eugene vs. Sunset – 1989 (4A)
High, Tour – 25, Joan Coleman, St. Paul – 1993 (1A)

STEALS –

High, Game – 12, Kris Strouhal, Glencoe vs. Benson 1993 (4A)
High, Tour – 22, Their Cleaver, Adrian – 1995 (1A)

Don't Miss The Game That Has Featured
12 NBA #1 Draft Picks
29 NBA All-Stars • 4 NBA MVPs



USA VS. THE WORLD

TODAY'S TOP PROSPECTS...TOMORROW'S NBA STARS

APRIL 10, 2020

7 PM

MODA CENTER

TICKETS STARTING AT \$10

nikehoopsummit.com

Promo code OSAA for 20% off (PL3 and PL4 only)



MAKING LEGENDS DAILY SINCE 1964.

To order online or find the Abby's location in your neighborhood, visit www.abbys.com.



These days you can eat just about any kind of pizza, and if pear and arugula is your dream pie, more power to you. But our customers want the same things our customers wanted back in 1964 - delicious traditional pizza, with toppings edge to edge, and a fun, casual environment.

If we sound a little old fashioned, that's kind of the point.

Abby's

LEGENDARY PIZZA™

A Legendary Pizza Tradition

 Just do it.

[nike.com](https://www.nike.com)

OSAA Girls Basketball Championships

State Champions Past 10 Years (see www.osaa.org/archives for a complete list of all-time state champions)

| Year | Class | Champion (W-L) | Coach | 2 nd Place (W-L) | Coach | Score | Site |
|------|-------|---------------------------|----------------------------------|-------------------------------------|-------------------|-------|-------------------------------|
| 2009 | 6A | Oregon City (24-2) | Kurt Guelsdorf | South Eugene (27-1) | Steve Eastburn | 46-37 | Chiles Center, Portland |
| | 5A | Willamette (27-0) | P. Brothers/L. Haas /T. Harrison | North Eugene (19-8) | Bill Wagner | 49-33 | Chiles Center, Portland |
| | 4A | La Pine (25-3) | Kim Beer | Cottage Grove (24-4) | Kerry Clawson | 40-32 | Gill Coliseum, Corvallis |
| | 3A | Burns (24-2) | Alice Herauf | Santiam Christian (26-2) | Melissa McLain | 42-32 | Cone Field House, Salem |
| | 2A | Santiam (28-1) | Joy Lease | Nestucca (22-6) | John Elder | 48-37 | Pendleton Convention Center |
| | 1A | Joseph (23-2) | Lance Homan | Imbler (24-3) | Barry Bowers | 45-44 | Baker HS |
| 2010 | 6A | Southridge (26-2) | Michael Meek | Jesuit (22-7) | Mike McNeal | 47-38 | Rose Garden, Portland |
| | 5A | Jefferson (19-2) | Ikeya Newton | Wilsonville (23-5) | Cindy Anderson | 50-40 | McArthur Court, Eugene |
| | 4A | Cottage Grove (26-2) | Kerry Clawson | Marist (19-9) | Michelle Quist | 53-51 | Gill Coliseum, Corvallis |
| | 3A | Regis (23-4) | Jeff Koehnke / Jason Koehnke | Vale (21-8) | Jason Johnson | 52-39 | Cone Field House, Salem |
| | 2A | Portland Christian (29-0) | Tom West | St. Mary's (23-3) | Rick Jackson | 54-31 | Pendleton Convention Center |
| | 1A | Imbler (26-0) | Barry Bowers | Griswold (23-6) | Dean Fouquette | 66-37 | Baker HS |
| 2011 | 6A | Jesuit (27-1) | Jason Lowery | Clackamas (27-2) | Ken Trapp | 42-39 | Rose Garden, Portland |
| | 5A | Springfield (27-2) | Bill Wagner | West Albany (23-5) | Craig Swanson | 42-40 | Matthew Knight Arena, Eugene |
| | 4A | Cascade (26-2) | Mark Stevens | La Salle (28-1) | Jared Curtiss | 58-56 | Gill Coliseum, Corvallis |
| | 3A | Vale (24-2) | Jason Johnson | Salem Academy (26-4) | Rene' Houle | 49-36 | Marshfield HS / North Bend HS |
| | 2A | Regis (29-1) | Jeff Koehnke / Jason Koehnke | Scio (25-5) | Tony Miller | 41-21 | Pendleton Convention Center |
| | 1A | Nixyaawii (28-3) | Jeremy Maddern | Hosanna Christian (24-5) | Tony Bush | 75-50 | Baker HS |
| 2012 | 6A | South Medford (30-0) | Tom Cole | Westview (20-8) | Lindsay Strothers | 61-46 | Rose Garden, Portland |
| | 5A | Springfield (26-3) | Bill Wagner | Willamette (25-3) | Paul Brothers | 16-7 | Matthew Knight Arena, Eugene |
| | 4A | Henley (25-4) | Shannon Carlson | Sutherlin (28-1) | Josh Grotting | 41-35 | Gill Coliseum, Corvallis |
| | 3A | Vale (25-2) | Jason Johnson | Valley Catholic (26-4) | John Innes | 43-29 | Marshfield HS / North Bend HS |
| | 2A | Regis (27-3) | Jason Koehnke / Jeff Koehnke | Scio (27-3) | Justin Duke | 59-49 | Pendleton Convention Center |
| | 1A | McKenzie (28-1) | Darin Harbick | St. Paul (22-6) | Mike Murphy | 44-33 | Baker HS |
| 2013 | 6A | Central Catholic (26-3) | Sandy Dickerson | South Medford (24-5) | Tom Cole | 57-36 | Rose Garden, Portland |
| | 5A | Willamette (23-4) | Paul Brothers | Springfield (24-4) | Bill Wagner | 48-41 | Matthew Knight Arena, Eugene |
| | 4A | Mazama (27-2) | Joy Lease | La Grande (22-6) | Doug Girdner | 53-43 | Gill Coliseum, Corvallis |
| | 3A | Valley Catholic (28-2) | John Innes | St. Mary's (26-3) | Richard Vasey | 26-3 | Marshfield HS / North Bend HS |
| | 2A | Regis (26-3) | Jason Koehnke / Jeff Koehnke | Union (21-8) | Tessa Nicholson | 60-48 | Pendleton Convention Center |
| | 1A | Damascus Christian (29-1) | Dave Wakefield | Condon / Wheeler / Arlington (28-2) | Teresa Humphrey | 46-44 | Baker HS |
| 2014 | 6A | Oregon City (22-6) | Kurt Guelsdorf | South Medford (26-4) | Tom Cole | 57-48 | Moda Center, Portland |
| | 5A | Willamette (26-1) | Paul Brothers | Corvallis (22-5) | Greg Garrison | 63-54 | Matthew Knight Arena, Eugene |
| | 4A | Sutherlin (27-0) | Josh Grotting | La Salle Prep (25-2) | Kelli Wedin | 52-40 | Gill Coliseum, Corvallis |
| | 3A | Vale (25-1) | Jason Johnson | Valley Catholic (27-3) | John Innes | 52-36 | Marshfield HS / North Bend HS |
| | 2A | Regis (28-2) | Kyle Tower / Dustin Lulay | Western Mennonite (25-5) | Robby Gilliam | 36-29 | Pendleton Convention Center |
| | 1A | Condon / Wheeler (30-0) | Teresa Humphrey | Damascus Christian (28-2) | Dave Wakefield | 57-52 | Baker HS |
| 2015 | 6A | South Salem (27-2) | Nick McWilliams | St. Mary's (23-6) | Dewey Taylor III | 56-60 | Chiles Center, Portland |
| | 5A | La Salle Prep (27-1) | Kelli Wedin | Hermiston (24-4) | Steve Hoffert | 51-46 | Gill Coliseum, Corvallis |
| | 4A | Sutherlin (28-0) | Josh Grotting | Henley (25-2) | Shannon Carlson | 51-46 | Liberty HS, Hillsboro |
| | 3A | Dayton (26-3) | Scott Spink | Salem Academy (24-4) | Ken Brown | 51-39 | Marshfield HS, Coos Bay |
| | 2A | Western Mennonite (26-4) | Robby Gilliam | Burns (21-9) | Brandon McMullen | 43-38 | Pendleton Convention Center |
| | 1A | Damascus Christian (30-0) | Dave Wakefield | Country Christian (25-5) | Russell Halverson | 51-46 | Baker HS |
| 2016 | 6A | South Salem (28-1) | Nick McWilliams | Tigard (25-4) | Steve Naylor | 49-42 | Chiles Center, Portland |
| | 5A | Silverton (28-0) | Tal Wold | Springfield (24-4) | Bill Wagner | 39-38 | Gill Coliseum, Corvallis |
| | 4A | Sutherlin (27-1) | Josh Grotting | Cascade (23-1) | Mark Stevens | 45-40 | Liberty HS, Hillsboro |
| | 3A | Dayton (27-3) | Scott Spink | Amity (23-7) | Reg McShane | 56-42 | Marshfield HS, Coos Bay |
| | 2A | Kennedy (25-4) | Kerry Hall / Peter Hall | Burns (27-3) | Brandon McMullen | 52-32 | Pendleton Convention Center |
| | 1A | Country Christian (27-2) | Russell Halverson | North Douglas (26-5) | Jeff Davis | 54-37 | Baker HS |
| 2017 | 6A | Southridge (27-2) | Michael Bergmann | Oregon City (21-7) | Kurt Guelsdorf | 45-27 | Chiles Center, Portland |
| | 5A | La Salle Prep (26-2) | Kelli Wedin | Silverton (21-5) | Tal Wold | 42-28 | Gill Coliseum, Corvallis |
| | 4A | Sutherlin (23-5) | Josh Grotting | Banks (22-3) | Brandon Begley | 49-43 | Forest Grove HS |
| | 3A | Blanchet Catholic (24-3) | Ron Hittner | Dayton (28-2) | Scott Spink | 36-34 | Marshfield HS, Coos Bay |
| | 2A | Monroe (29-0) | Tony Parker | Western Mennonite (23-8) | Mike Hopper | 52-40 | Pendleton Convention Center |
| | 1A | Nixyaawii (27-0) | Jeremy Maddern | Country Christian (22-8) | Russell Halverson | 68-39 | Baker HS |
| 2018 | 6A | Southridge (28-1) | Michael Bermann | Benson (23-6) | Eric Knox | 46-27 | Chiles Center, Portland |
| | 5A | Marist Catholic (25-3) | Terry Harrison | La Salle Prep (23-5) | Kelli Wedin | 59-44 | Gill Coliseum, Corvallis |
| | 4A | Marshfield (27-2) | Bruce Bryant | Cascade (20-7) | Mark Stevens | 48-41 | Forest Grove HS |
| | 3A | Dayton (29-1) | Scott Spink | Salem Academy (26-3) | Ben Brown | 35-26 | Marshfield HS, Coos Bay |
| | 2A | Kennedy (29-1) | Kerry Hall | Monroe (26-4) | Tony Parker | 53-40 | Pendleton Convention Center |
| | 1A | Country Christian (26-4) | Russell Halverson | Nixyaawii (28-1) | Jeremy Maddern | 56-54 | Baker HS |
| 2019 | 6A | Benson (26-4) | Eric Knox | Southridge (25-4) | Michael Bergmann | 66-42 | Chiles Center, Portland |
| | 5A | La Salle Prep (25-4) | Kelli Wedin | Springfield (22-5) | Teke Silva | 55-48 | Gill Coliseum, Corvallis |
| | 4A | Baker (25-1) | Mat Sand | Marist Catholic (19-9) | Britton Reeser | 51-48 | Forest Grove HS |
| | 3A | Clatskanie (21-4) | John Blodgett | Blanchet Catholic (24-5) | Ron Hittner | 40-39 | Marshfield HS, Coos Bay |
| | 2A | Heppner (22-8) | Robert Wilson | Coquille (27-2) | Tim GeDeros | 41-40 | Pendleton Convention Center |
| | 1A | St. Paul (30-0) | Dave Matlock | Powder Valley (26-4) | Allen Bingham | 49-32 | Baker HS |

Wilson



WHO'S GOT **NXT**?


Evolving the indoor game ball for the next generation.

The EVO NXT, combines the durability and feel of our famous Evolution ball, the grip and moisture management of our Solution ball, and a suite of new technology to give shooters the range and feel they need to win. With a Micro-Touch cover that provides an extra layer of grip and moisture management, and a super soft core construction that provides shooters free range from further than ever, this is truly the next evolution of the game.

FIND OUT MORE AT

WILSON.COM/BASKETBALL





100% Paid College Tuition!

Careers with National Guard include

- Medical • Engineering • Mechanics
- Communications • Military Intelligence

Begin your road to success at
OregonArmyGuard.com/Education

OREGON
**ARMY
NATIONAL
GUARD**





www.ePledgeDrive.com

888-412-0333

Fundraising Simplified

FAMILIES take 10 minutes to enter friends and family contact information and upload a picture. Plus it's quick and easy to post on social media.

ePledgeDrive conducts a proactive email and text campaign throughout a 3-4 week time period utilizing personalized donation requests.

DONORS make donations via credit card or PayPal. They can also pay directly by cash or check.

| Amount Raised | ePledgeDrive Fee |
|---------------------|------------------|
| \$1-\$25,000 | 8% |
| \$25,000-\$50,000 | 6% |
| \$50,000-\$75,000 | 5% |
| \$75,000-\$100,000 | 4% |
| More than \$100,000 | 3% |

- Teams always keep 100% of any offline donations (cash & checks)
- Additional third party credit card processing fees are 2.9% plus \$.30 per transaction
- Most donors choose to increase their donation to cover the credit card processing fee

Online Fundraising Campaigns For

- Sports Teams
- Marching Bands
- Cheerleading
- STEAM
- eSports
- Other School Programs



ePledgeDrive LLC is the Preferred Fundraising Platform of the OSAA

***Give back
to the game.***

***Become an
official.***

newofficials.org



WHAT WILL BE YOUR WINNING COMBINATION?



PARTICIPATE IN HIGH SCHOOL SPORTS AND ACTIVITIES.

#MYREASONWHY

MyReasonWhy.com



OnPoint[®]

COMMUNITY CREDIT UNION



PACIFIC OFFICE AUTOMATION
— PROBLEM SOLVED —



Wendy's



moda
HEALTH



hudl



Carl's Jr.



MARINES

ePledgeDrive



VIZUAL
EDGE

DICK'S
SPORTING GOODS



VNN



Jostens



NSP
Northwest Sports
Photography

Rush
TEAM APPAREL
EVENT MERCHANDISING
ONSITE & ONLINE

CROWN TROPHY